

**TECHNICAL MANUAL**

**UNIT, INTERMEDIATE DIRECT SUPPORT AND  
INTERMEDIATE GENERAL SUPPORT MAINTENANCE  
REPAIR PARTS AND SPECIAL TOOLS LIST**

**FOR**

**COMPRESSOR UNIT, RECIPROCATING  
5 CFM, 175 PSI  
GASOLINE ENGINE DRIVEN,  
HAND TRUCK MOUNTED  
MODEL NUMBER ZPC 175/5  
NSN 4310401-19040285**

**This manual supersedes TM 5-4310-378-24P, 20 February 1987.**

**Approved for public release; distribution is unlimited**

**This copy is a reprint which includes current  
pages from Changes 1 and 2.**

---

**HEADQUARTERS, DEPARTMENT OF THE ARMY**

**7 AUGUST 1989**

CHANGE  
NO. 3

HEADQUARTERS  
DEPARTMENT OF THE ARMY  
WASHINGTON, D.C., 5 July 1997

Unit, Intermediate Direct Support and  
Intermediate General Support  
Maintenance Repair Parts and Special Tools List

for

COMPRESSOR UNIT, RECIPROCATING, 5 CF1  
175 PSI, GASOLINE ENGINE DRIVEN, HAND TRUCK MOUNTED  
MODEL NUMBER ZPC175/5  
NSN 4310-01-190-4285

DISTRIBUTION STATEMENT A: Approved for public release; distribution is unlimited

TM 5-4310-378-24P, 7 August 1989, is changed as follows:

1. Remove and insert pages as indicated below. New or changed text material is indicated by a vertical bar in the margin. An illustration change is indicated by a miniature pointing hand.

Remove pages

i and ii  
2-1 and Figure 3  
I-3 and I-4  
I-9 and I-10

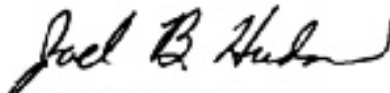
Insert pages

i and ii  
2-1 and Figure 3  
I-3 and I-4  
I-9 and I-10

2. Retain this sheet in front of manual for reference purposes.

By Order of the Secretary of the Army:

Official:



JOEL B. HUDSON  
Administrative Assistant to the  
Secretary of the Army  
03495

DENNIS J. REIMER  
General, United States Army  
Chief of Staff

DISTRIBUTION:

To be distributed in accordance with DA Form 12-25-E, block No. 2438, requirements for TM 5-4310-378-24P.

CHANGE  
NO. 2

HEADQUARTERS  
DEPARTMENT OF THE ARMY  
WASHINGTON, D.C., 30 April 1993

Unit, Intermediate Direct Support and Intermediate General Support  
Maintenance Repair Parts and Special Tools List  
for  
COMPRESSOR UNIT, RECIPROCATING  
5 CFM, 175 PSI  
GASOLINE ENGINE DRIVEN,  
HAND TRUCK MOUNTED  
MODEL NUMBER ZPC 175/5  
NSN 4310-01-190-0285

SPECIAL DISTRIBUTION A: Approved for public release; distribution is unlimited

TM 5431 10378-24P, 7 August 1989, is changed as follows:

1. Remove and insert pages as Indicated below. New or changed text material is indicated by a vertical bar in the margin. An illustration change is indicated by a miniature pointing hand.

Remove pages

i and ii  
2-1 and fig. 3  
6-1 and 6-2  
I-3 through I-10  
I-13 and I-14

Insert pages

i and ii  
2-1 and fig. 3  
6-1 and 6-2  
I-3 through I-10  
I-13 and I-14

2. Retain this sheet in front of manual for reference purposes.

By Order of the Secretary of the Army:

Official:

MILTON H. HAMILTON  
Administrative Assistant to the  
Secretary of the Army  
04289

GORDON R. SULLIVAN  
General, United States Army  
Chief of Staff

DISTRIBUTION:

To be distributed in accordance with DA Form 12-25E, block No. 2438, requirements for TM 5-4310-378-24P.

CHANGE  
NO. 1

HEADQUARTERS  
DEPARTMENT OF THE ARMY  
WASHINGTON, D.C., 9 NOVEMBER 1992

Unit, Intermediate Direct Support and Intermediate General Support  
Maintenance Repair Parts and Special Tools List  
for  
COMPRESSOR UNIT, RECIPROCATING  
5 CFM, 175 PSI  
GASOLINE ENGINE DRIVEN,  
HAND TRUCK MOUNTED  
MODEL NUMBER ZPC 175/5  
NSN 4310-01-190-0285

Approved for public release; Distribution is unlimited

TM 5-4310-378-24P, 7 August 1989 is changed as follows:

1. Remove and insert pages as indicated below. New or changed text material is indicated by a vertical bar in the margin. An illustration change is indicated by a miniature pointing hand.

Remove pages

2-1 and Fig. 3  
6-1 and 6-2  
7-1 and 7-2  
14-1  
I-1 through I-4  
I-7 through I-10  
I-13 through I-16

Insert pages

2-1 and Fig. 3  
6-1 and 6-2  
7-1 and 7-2  
14-1  
I-1 through I-4  
I-7 through I-10  
I-13 through I-16

2. Retain this sheet in front of manual for referee purposes.

By Order of the Secretary of the Army:

Official:

MILTON H. HAMILTON  
*Administrative Assistant to the  
Secretary of the Army*  
O2916

GORDON R. SULLIVAN  
*General, United States Army  
Chief of Staff*

DISTRIBUTION:

To be distributed in accordance with DA Form 1 2-25E, block No. 2438, requirements for TM 54310-378-24P.

TECHNICAL MANUAL

NO. 5-4310-378-24P

HEADQUARTERS  
DEPARTMENT OF THE ARMY  
WASHINGTON, D.C., 7 August 1989

TECHNICAL MANUAL

Unit, Intermediate Direct Support and  
Intermediate General Support  
Maintenance Repair Parts and Special Tools List

for

COMPRESSOR UNIT, RECIPROCATING, 5 CFM  
175 PSI, GASOLINE ENGINE DRIVEN, HAND TRUCK MOUNTED  
MODEL NUMBER ZPC175/5  
NSN 4310-01-190 285  
Current as of 7 August 1969

**REPORTING ERRORS AND RECOMMENDING IMPROVEMENTS**

You can help improve this manual. If you find any mistakes, or if you know of a way to improve these procedures, please let us know. Mail your letter or DA Form 2028 (Recommended Changes to Publications and Blank Forms), or DA Form 2028-2 located in the back of this manual directly to: Commander, US Army Aviation and Troop Command, ATTN: AMSAT-I-MP, 4300 Goodfellow Blvd., St. Louis, MO 63120-1798. You may also submit your recommended changes by E-mail directly to <mpmt%avma28st-louis-emh7.army.mil>. A reply will be furnished directly to you. Instructions for sending an electronic 2028 may be found at the back of this manual immediately preceding the hard copy 2028.

DISTRIBUTION STATEMENT A: Approved for public release; distribution is unlimited

**TABLE OF CONTENTS**

		Page	Illust Figure
Section I.	INTRODUCTION .....	1	
Section II.	REPAIR PARTS LIST .....	1-1	
Group 01.	COMPRESSOR DRIVE		
	Drive Belt and Engine Pulley .....	1-1	1
Group 02.	COMPRESSOR ASSEMBLY		
	Compressor Assembly .....	2-1	2
	Compressor Cylinder Heads .....	3-1	3
	Compressor Cylinder .....	4.1	4
	Crankcase .....	5-1	5

\* This manual supersedes TM 5-4310-378-24P, dated 20 February 1987.

	Page	Illust Figure
Group 03. ENGINE ASSEMBLY		
EMI Kit, Flywheel Shroud, and Flywheel .....	6-1	6
Air Cleaner and Carburetor .....	7-1	7
Governor Lever, Spring, and Rod Sets.....	8-1	8
Recoil Starter Assembly.....	9-1	9
Piston Connecting Rod, and Crankshaft.....	10-1	10
Crankcase.....	11-1	11
 Group 04. AIR RECEIVER SYSTEM		
Gauge, Vales and Air Tank .....	12-1	12
 Group 05. AIR DISCHARGE SYSTEM		
Delivery Hose Assembly .....	13-1	13
 Group 06. HANDTRUCK ASSEMBLY		
Wheels and Frame Assembly .....	14-1	14
 Section III. SPECIAL TOOLS LIST (Not Applicable)		
 Section IV. CROSS REFERENCE INDEXES		
National Stock Number Index .....	I-1	
Part Number Index .....	I-3	
Figure and Item Number Index .....	I-10	

UNIT, INTERMEDIATE DIRECT SUPPORT AND  
INTERMEDIATE GENERAL SUPPORT MAINTENANCE  
REPAIR PARTS AND SPECIAL TOOLS LIST

---

SECTION I. INTRODUCTION

**1. SCOPE.** This RPSTL lists and authorizes spares and repair parts; special tools; special test, measurement, and diagnostic equipment (TMDE); and other special support equipment required for performance of Unit, Intermediate Direct Support and Intermediate General Support Maintenance of the Compressor Unit, 5 CFM. It authorizes the requisitioning, issue, and disposition of spares, repair parts and special tools as indicated by the source, maintenance and recoverability (SMR) codes.

**2. GENERAL.** In addition to this section, Introduction, this Repair Parts and Special Tools List is divided into the following sections:

**a. Section II. Repair Parts List.** A list of spares and repair parts authorized by this RPSTL for use in the performance of maintenance. The list also includes parts which must be removed for replacement of the authorized parts. Parts lists are composed of functional groups in ascending alphanumeric sequence, with the parts in each group listed in ascending figure and item number sequence. Bulk materials are listed in item name sequence. Repair parts kits are, listed separately in their own functional group within Section II. Repair parts for repairable special tools are also listed in this section. Items listed are shown on the associated illustration(s)/figure(s).

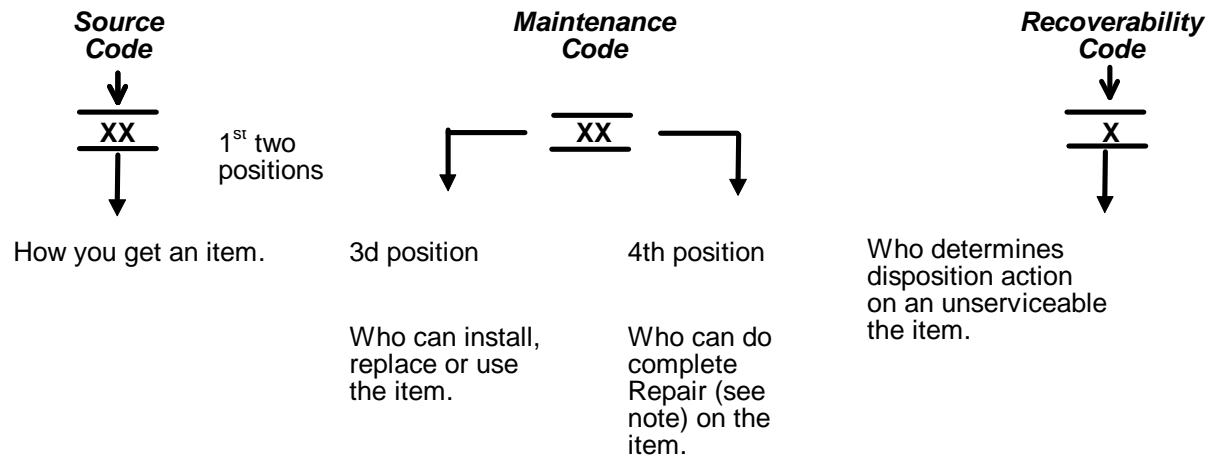
**b. Section III. Special Tools List.** A list of special tools, special TMDE, and other special support equipment authorized by this RPSTL (as indicated by Basis of Issue (BOI) information in DESCRIPTION AND USABLE ON CODE column) for the performance of maintenance.

**c. Section IV. Cross-references Indexes.** A list, in National Item Identification Number (NIIN) sequence, of all National stock numbered items appearing in the listing, followed by a list in alphanumeric sequence of all part numbers appearing in the listings. National stock numbers and part numbers are cross-referenced to each illustration figure and item number appearance. The figure and item number index lists figure and item number in alphanumeric sequence and crossreferences NSN, FSCM and part number.

**3. EXPLANATION OF COLUMNS (SECTIONS II AND III).**

**a. ITEM NO. (Column (1)).** Indicates the number used to identify items called out in the illustration.

**b. SMR Code (Column (2)).** The Source, Maintenance, and Recoverability (SMR) code is a 5-position code containing supply/requisitioning information, maintenance category authorization criteria, and disposition instruction, as shown in the following breakout:



\*Complete Repair: Maintenance capacity, capability, and authority to perform all corrective maintenance tasks of the "Repair" function in a use/user environment in order to restore serviceability to a failed item.

(1) **Source Code.** The source code tells you how to get an item needed for maintenance, repair, or overhaul of an end item/equipment. Explanations of source codes follows:

Code	Explanation
PA PB PC** PD PE PF PG	Stocked items; use the applicable NSN to request/requisition items with these source codes. They are authorized to the category indicated by the code entered in the 3d position of the SMR code.
KD KF KB	Items with these codes are not to be requested/requisitioned individually. They are part of a kit which is authorized to the maintenance category indicated in the 3d position of the SMR code. The complete kit must be requisitioned and applied.

Code	Explanation
MO--(Made at org. AVUM Level) MF--(Made at DS/ AVUM Level) MH--(Made at GS Level) ML--Made at Specialized Repair Activity (SRA)) MD--(Made at Depot)	Items with these codes are not to be requested/requisitioned individually. They must be made from bulk material which is identified by the part number in the DESCRIPTION and USABLE ON CODE (UOC) column and listed in the Bulk Material group of the repair parts list in this RPSTL. If the item is authorized to you by the 3d position code of the SMR code, but the source code indicates it is made at a higher level, order the item from the higher level of maintenance.



AO--(Assembled by org/AVUM Level)
AF--(Assembled by DS/AVIM Level)
AH--(Assembled by GS Category)
AL--(Assembled by SRA)
AD--(Assembled by Depot)

Explanation

Items with these codes are not to be requested/requisitioned individually. The parts that make up the assembled item must be requisitioned or fabricated and assembled at the level of maintenance indicated by the source code. If the 3d position code of the SMR code authorizes you to replace the item, but the source code indicates the items are assembled at a higher level, order the item from the higher level of maintenance.

Code

Explanation

- XA-- Do not requisition an "XA"-coded item. Order its next higher assembly. (Also, refer to the NOTE below.)
- XB-- If an "XB" item is not available from salvage, order it using the FSCM and part number given.
- XC-- Installation drawing, diagram, instruction sheet, field service drawing, that is identified by manufacturer's part number.
- XD-- Item is not stocked. Order an "XD"-coded item through normal supply channels using the FSCM and part number given, if no NSN is available.

**NOTE**

**Cannibalization or controlled exchange, when authorized, may be used as a source of supply for items with the above source codes, except for those source coded "XA" or those aircraft support items restricted by requirements of AR 750-1.**

**(2) Maintenance Code.** Maintenance codes tells you the level(s) of maintenance authorized to USE and REPAIR support items. The maintenance codes are entered in the third and fourth positions of the SMR code as follows:

- (a) The maintenance code entered in the third position tells you the lowest maintenance level authorized to remove, replace, and use an item. The maintenance code entered in the third position will indicate authorization to one of the following levels of maintenance.

Code

Application/Explanation

- C -- Crew or operator maintenance done within organizational or aviation unit maintenance.
- O -- Organizational or aviation unit category can remove, replace, and use the item.
- F -- Direct support or aviation intermediate level can remove, replace, and use the item.

H -- General support level can remove, replace, and use the item.

L --Specialized repair activity can remove, replace, and use the item.

D --Depot level can remove, replace, and use the item.

(b) The maintenance code entered in the fourth position tells whether or not the item is to be repaired and identifies the lowest maintenance level with the capability to do complete repair (i.e., perform all authorized repair functions.) NOTE: Some limited repair may be done on the item at a lower level of maintenance, if authorized by the Maintenance Allocation Chart (MAC) and SMR codes. This position will contain one of the following maintenance codes.

Code	Application/Explanation
------	-------------------------

O	--Organizational or (aviation unit) is the lowest level that can do complete repair of the item.
---	--

F	--Direct support or aviation intermediate is the lowest level that can do complete repair of the item.
---	--

H	--General Support is the lowest level that can do complete repair of the item.
---	--

L	--Specialized repair activity is the lowest level that can do complete repair of the item.
---	--

D	--Depot is the lowest level that can do complete repair of the item.
---	--

Z	--Nonreparable. No repair is authorized.
---	--

B	--No repair is authorized. (No parts or special tools are authorized for the maintenance of a "B" coded item). However, the item may be reconditioned by adjusting, lubricating, etc., at the user level.
---	---

**(3) Recoverability Code.** Recoverability codes are assigned to items to indicate the disposition action on unserviceable items. The recoverability code is entered in the fifth position of the SMR Code as follows:

Recoverability Codes	Application/Explanation
-------------------------	-------------------------

Z	-- Nonreparable item. When unserviceable, condemn and dispose of the item at the level of maintenance shown in 3d position of SMR Code.
---	---

Recoverability Codes	Application/Explanation
O	--Reparable item. When uneconomically reparable, condemn and dispose of the item at organizational or aviation unit level.
F	--Reparable item. When uneconomically reparable, condemn and dispose of the item at the direct support or aviation intermediate level.
H	--Reparable item. When uneconomically reparable, condemn and dispose of the item at the general support level.
D	--Reparable item. When beyond lower level repair capability, return to depot. Condemnation and disposal of item not authorized below depot level.
L	--Reparable item. Condemnation and disposal not authorized below specialized repair activity (SRA).
A	--Item requires special handling or condemnation procedures because of specific reasons (e.g., precious metal content, high dollar value, critical material, or hazardous material). Refer to appropriate manuals/directives for specific instructions.

**c. FSCM (Column (3)).** The Federal Supply Code for Manufacturer (FSCM) is a 5-digit numeric code which is used to identify the manufacturer, distributor, or Government agency, etc., that supplies the item.

**d. PART NUMBER (Column (4)).** Indicates the primary number used by the manufacturer, (individual, company, firm, corporation, or Government activity), which controls the design and characteristics of the item by means of its engineering drawings, specifications standards, and inspection requirements to identify an item or range of items.

**NOTE**

**When you use an NSN to requisition an item, the item you receive may have a different part number from the part ordered.**

**e. DESCRIPTION AND USABLE ON CODE (UOC) (Column (5)).** This column includes the following information:

- (1) The Federal item name and, when required, a minimum description to identify the item.
- (2) The physical security classification of the Item is indicated by the parenthetical entry, e.g., Phy Sec C1 - Confidential, Phy Sec C1 (S) - Secret, Phy Sec C1 (T) - Top Secret.

- (3) Items that are included in kits and sets are listed below the name of the kit or set.
- (4) Spare/repair parts that make up an assembled item are listed immediately following the assembled item line entry.
- (5) Part numbers for bulk materials are referenced in this column in the line item entry for the item to be manufactured/fabricated.
- (6) When the item is not used with all serial numbers of the same model, the effective serial numbers are shown on the last line(s) of the description (before UOC).
- (7) The usable on code, when applicable (see paragraph 5, Special Information).
- (8) In the Special Tools List section, the basis of issue (BOI) appears as the last line(s) in the entry for each special tool, special TMDE, and other special support equipment. When density of equipments supported exceeds density spread indicated in the basis of issue, the total authorization is increased proportionately.
- (9) The statement "END OF FIGURE" appears just below the last item description in Column 5 for a given figure in both Section II and Section III.
- (10) The indenture, shown as dots appearing before the repair part, indicates that the item is a repair part of the next higher assembly.

f. **QTY (Column (6)).** The QTY (quantity per figure column) indicates the quantity of the item used in the breakout shown on the illustration figure, which is prepared for a functional group, subfunctional group, or an assembly. A "V" appearing in this column in lieu of a quantity indicates that the quantity is variable and may vary from application to application.

**4. EXPLANATION OF COLUMNS (SECTION IV).**

**a. NATIONAL STOCK NUMBER (NSN) INDEX.**

(1) **STOCK NUMBER column.** This column lists the NSN by National item identification number

(NIIN) sequence. The NIIN consists of the last nine digits of the

$$\frac{\text{NSN}}{\text{NIIN}}$$
 NSN, i.e.  $\frac{5305-01-574-1467}{\text{NIIN}}$

When using this column to locate an item, ignore the first 4 digits of the NSN. However, the complete NSN should be used when ordering items by stock number.

(2) **FIG. column.** This column lists the number of the figure where the item is identified/located. The figures are in numerical order in Section II and Section III.

- (3) **ITEM column.** The item number identifies the item associated with the figure listed in the adjacent FIG. column. This item is also identified by the NSN listed on the same line.

**b. PART NUMBER INDEX.** Part numbers in this index are listed by part number in ascending alphanumeric sequence (i.e., vertical arrangement of letter and number combination which places the first letter or digit of each group in order A through Z, followed by the numbers 0 through 9 and each following letter or digit in like order).

- (1) **FSCM column.** The Federal Supply Code for Manufacturer (FSCM) is a 5-digit numeric code used to identify the manufacturer, distributor, or Government agency, etc., that supplies the item.
- (2) **PART NUMBER.** column. Indicates the primary number used by the manufacturer (individual, firm, corporation, or Government activity), which controls the design and characteristics of the item by means of its engineering drawings, specifications standards, and inspection requirements to identify an item or range of items.
- (3) **STOCK NUMBER column.** This column lists the NSN for the associated part number and manufacturer identified in the PART NUMBER and FSCM columns to the left.
- (4) **FIG. column.** This column lists the number of the figure where the item is identified/located in Sections II and III.
- (5) **ITEM column.** The item number is that number assigned to the item as it appears in the figure referenced in adjacent figure number column.

**c. FIGURE AND ITEM NUMBER INDEX.**

- (1) **FIG. column.** This column lists the number of the figure where the item is identified/located in Section II and III.
- (2) **ITEM column.** The item number is that number assigned to the item as it appears in the figure referenced in the adjacent figure number column.
- (3) **STOCK NUMBER column.** This column lists the NSN for the item.
- (4) **FSCM column.** The Federal Supply Code for Manufacturer (FSCM) is a 5-digit numeric code used to identify the manufacturer, distributor, or Government agency, etc., that supplies the item.
- (5) **PART NUMBER** column. Indicates the primary number used by the manufacturer (individual, firm, corporation, or Government activity), which controls the design and characteristics of the item by means of its engineering drawings, specifications standards, and inspection requirements to identify an item or range of items.

**5. SPECIAL INFORMATION.**

**a. USABLE ON CODE.** The usable on code appears in the lower left corner of the Description column heading. Usable on codes are shown as "UOC:...." in the Description Column (justified left) on the last line applicable item description/ nomenclature. Uncoded items are applicable to all models..

**b. ASSOCIATED PUBLICATIONS.** The publication listed below pertains to the Compressor Unit, 5 CFM, and its components.

Publication	Short Title
TM 5-4310-378-14	Operator's and Maintenance Manual for 5 CFM Compressor Unit

**6. HOW TO LOCATE REPAIR PARTS.**

**a. When National Stock Number or Part Number is NOT Known.**

- (1) **First.** Using the table of contents, determine the assembly group or subassembly group to which the item belongs. This is necessary since figures are prepared for assembly groups and subassembly groups, and listings are divided into the same groups.
- (2) **Second.** Find the figure covering the assembly group or subassembly group to which the item belongs.
- (3) **Third.** Identify the item on the figure and note the item number.
- (4) **Fourth.** Refer to the Repair Parts List for the figure to find the part number for the item number noted on the figure.
- (5) **Fifth.** Refer to the Part Number Index to find the NSN, if assigned.

**b. When National Stock Number or Part Number is Known:**

- (1) **First.** Using the Index of National Stock Numbers and Part Numbers, find the pertinent National Stock Number or Part Number. The NSN index is in National Item Identification Number (NIIN) sequence (see 4a(1)). The part numbers in the Part Number index are listed in ascending alphanumeric sequence (see paragraph 4b). Both indexes cross-reference you to the illustration figure and item number of the item you are looking for.
- (2) **Second.** After finding the figure and item number, verify that the item is the one you are looking for, then locate the item number in the repair parts list for the figure.

**7. ABBREVIATIONS.** Abbreviations used in this manual are listed in MIL-STD-12.

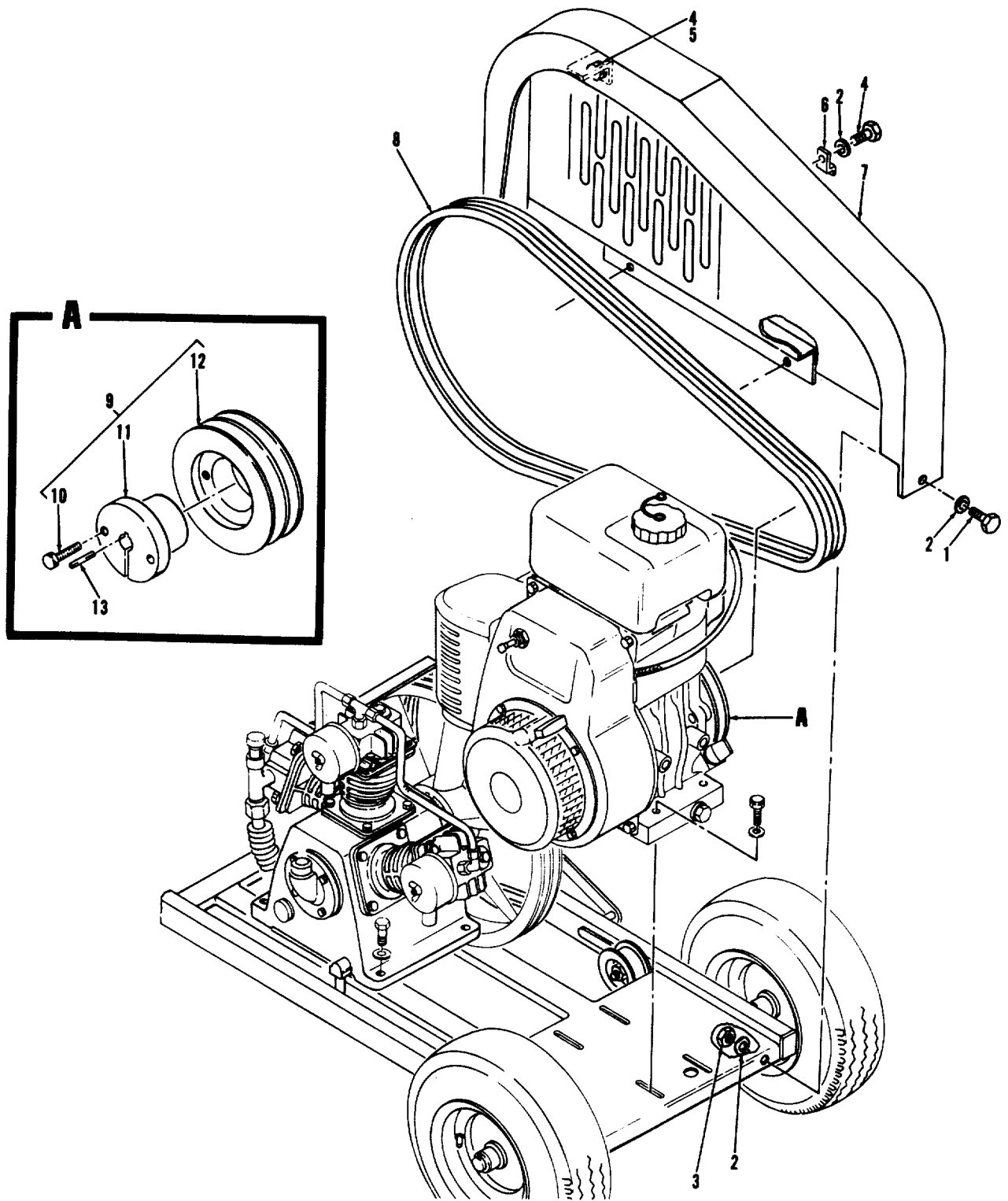


Figure 1. Drive Belt and Engine Pulley

## SECTION II

TM 5-4310-378-24P

(1)	(2)	(3)	(4)	(5)	(6)
ITEM NO	SMR CODE	CAGEC	PART NUMBER	DESCRIPTION AND USABLE ON CODES(UOC)	QTY
GROUP 01. COMPRESSOR DRIVE					
FIGURE 1. DRIVE BELT AND ENGINE PULLEY					
1	PAOZZ	96906	MS35307-306	SCREW, CAP, HEXAGON H.....	4
2	PAOZZ	96906	MS15795-810	WASHER, FLAT.....	6
3	PAOZZ	96906	MS16228-4C	NUT, SELF-LOCKING, HE.....	2
4	PAOZZ	96906	MS35307-303	SCREW, CAP, HEXAGON H.....	1
5	PAOZZ	96906	MS35338-139	WASHER, LOCK.....	3
6	XDOZZ	58328	ZPC1000234	LATCH, LEVER.....	1
7	XDOZZ	58328	ZPC1000027	SHROUD, BELT.....	1
8	PAOZZ	81348	ZZ-B-190/2P66B2R	BELTS, V, MATCHED SET.....	1
9	XDOZZ	58328	ZPC1000028	PULLEY, ENGINE, ASSY.....	1
10	PAOZZ	96906	MS90728-6	.SCREW, CAP, HEXAGON H.....	2
11	PAOZZ	76241	HQX3/4	.BUSHING.....	1
12	PAOZZ	76241	DH2400	.SHEAVE.....	1
13	PAOZZ	96906	MS20066-191	.KEY, MACHINE.....	1

END OF FIGURE



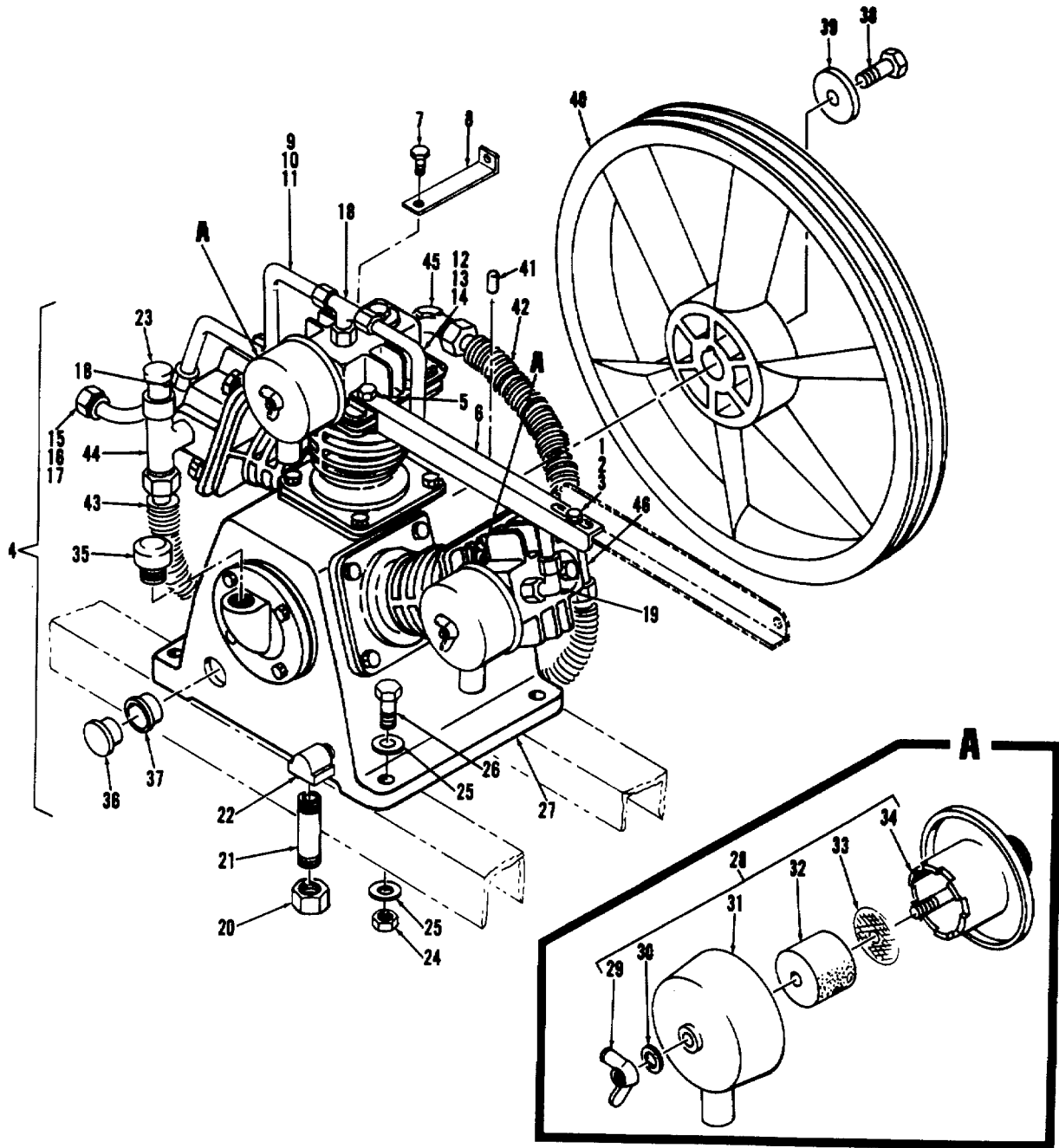


Figure 2. Compressor Assembly

## SECTION II

TM 5-4310-378-24P

(1)	(2)	(3)	(4)	(5)	(6)
ITEM NO	SMR CODE	CAGEC	PART NUMBER	DESCRIPTION AND USABLE ON CODES(UOC)	QTY
				GROUP 02. COMPRESSOR ASSEMBLY FIGURE 2. COMPRESSOR ASSEMBLY	
1	PAOZZ	96906	MS16228-4C	.NUT, SELF-LOCKING, HE .....	1
2	PAOZZ	96906	MS15795-810	.WASHER, FLAT .....	1
3	PAOZZ	96906	MS35307-306	.SCREW, CAP, HEXAGON H.....	1
4	PDOHH	58328	ZPC1000051	COMPRESSOR UNIT, REC .....	1
5	PAOZZ	58328	ZPC1000059	SCREW, CAP, HEXAGON H.....	1
6	XDOZZ	58328	ZPC1000049	.BRACKET, REAR STRUT .....	1
7	PAOZZ	58328	ZPC1000059	SCREW, CAP, HEXAGON H.....	1
8	XDOZZ	58328	ZPC1000037	BRACKET, SHROUD .....	1
9	XBOZZ	58328	ZPC1000053	TUBE ASSEMBLY.....	1
10	PAOZZ	96906	MS39177-3	SLEEVE, COMPRESSION.....	2
11	PAOZZ	96906	MS39176-3	NUT, TUBE COUPLING .....	2
12	XBOZZ	58328	ZPC1000054	TUBE ASSEMBLY.....	1
13	PAOZZ	96906	MS39177-3	SLEEVE, COMPRESSION.....	2
14	PAOZZ	96906	MS39176-3	NUT, TUBE COUPLING .....	2
15	XBOZZ	58328	ZPC1000055	TUBE ASSEMBLY.....	1
16	PAOZZ	96906	MS39177-3	.SLEEVE, COMPRESSION .....	2
17	PAOZZ	96906	MS39176-3	NUT, TUBE COUPLING .....	2
18	PAOZZ	93061	172C-4-2	TEE, PIPE TO TUBE.....	2
19	PAOZZ	96906	MS39171-13	ELBOW, PIPE TO TUBE .....	1
20	PAOZZ	93061	213P-4	.CAP 1/4 NPT, BRASS .....	1
21	PAOZZ	96906	MS51846-28	.NIPPLE, PIPE 1/4 IN NPT BRASS .....	1
22	PAOZZ	81343	4-430239B	.ELBOW 1/4 NPT BRASS .....	1
23	PBOZZ	65514	AS213-2-2M-70	.VALVE, SAFETY RELIEF.....	1
24	PAOZZ	96906	MS16228-5C	NUT, SELF-LOCKING, HE .....	4
25	PAOZZ	96906	MS15795-812	WASHER, FLAT.....	8
26	PAOZZ	96906	MS35307-336	BOLT, MACHINE.....	4
27	PBOFH	55921	E-23A	COMPRESSOR, RECIPROC .....	1
28	PBOZZ	55921	C70111-66000	..STRAINER, S EDIMENT .....	2
29	PAOZZ	39428	90924A124	..NUT, PLAIN, WING.....	100
30	PAOZZ	55921	C92521-150400	..WASHER, FLAT.....	1
31	XDOZZ	55921	C70111-66170	..COVER, AIR STRAINER.....	1
32	PAOZZ	55921	C70111-66141	..FILTER ELEMENT, INTA .....	1
33	PAOZZ	55921	C70111-66110	..STRAINER ELEMENT, SE NO.8, CAD PLATED	1
34	XBOZZ	55921	C70111-66010	..BODY, AIR STRAINER .....	1
35	XDOZZ	55921	C70103-57610	.CAP, OIL BREATHER NO.8X62L, CAD PLATED	1
36	XDOZZ	55921	C70111-57700	.COVER, OIL GAGE .....	1
37	XDOZZ	55921	C70111-57730	.RETAINER, PACKING .....	1
38	PAOZZ	55921	C91501-1308025	.SCREW, CAP, HEXAGON H.....	1
39	PAOZZ	55921	C70112-76210	.WASHER, FLAT .....	1
40	XDOZZ	55921	C70132-76010	.PULLEY, COMPRESSOR .....	1
41	PAOZZ	55921	C70112-56060	.PIN, STRAIGHT, HEADLE .....	1
42	XDOZZ	55921	C70132-87100	.TUBE ASSEMBLY, METAL.....	1
43	XDOZZ	55921	C70172-87300	.PIPING ASSEMBLY .....	1
44	PBOZZ	55921	C70172-87030	.TEE, PIPE.....	1
45	PBOZZ	55921	C70122-87010	.ELBOW, PIPE.....	1
46	PBOZZ	55921	C70132-87030A	TEE.....	1

END OF FIGURE

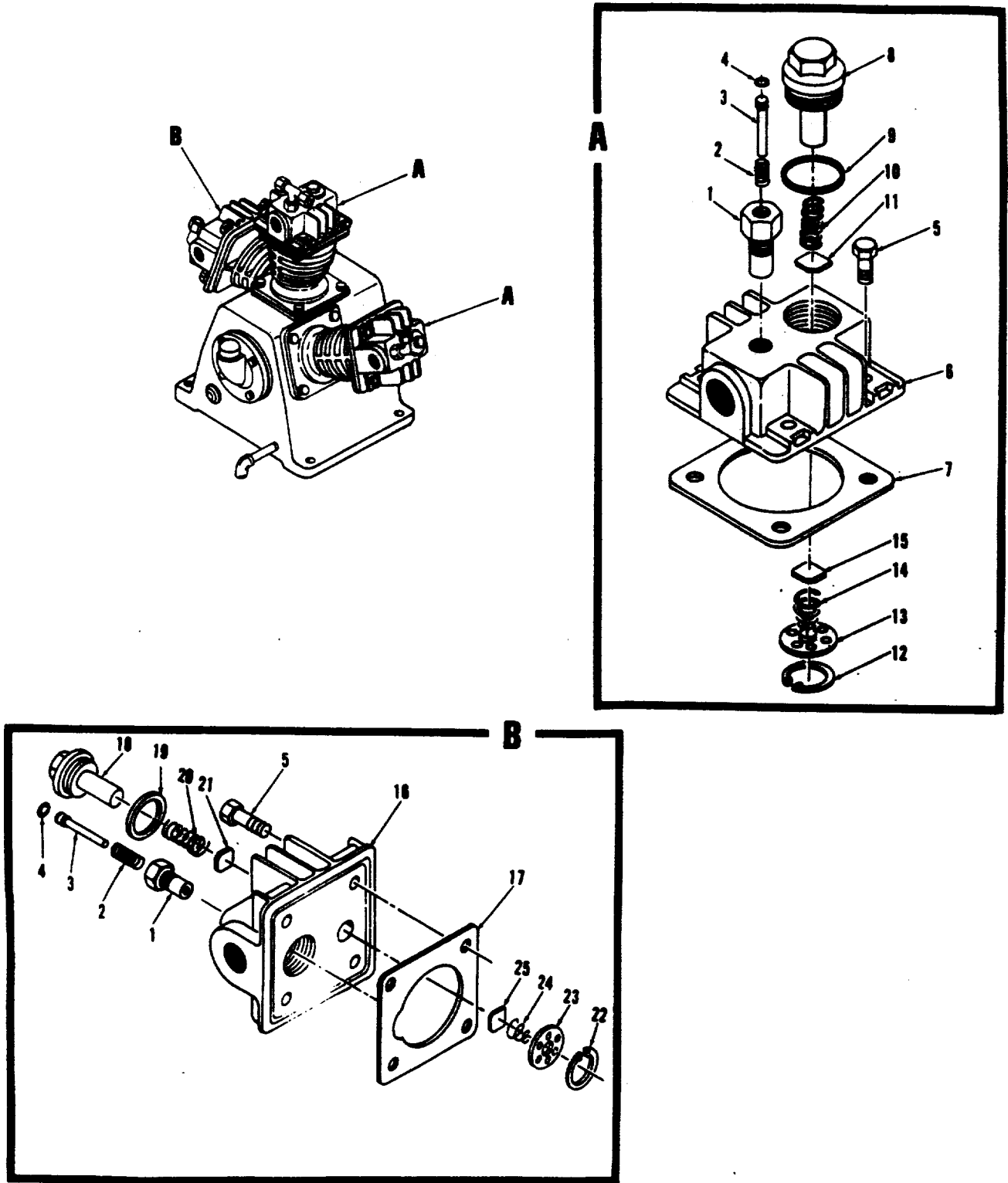


Figure 3. Compressor Cylinder Heads

(1)	(2)	(3)	(4)	(5)	(6)
ITEM NO	SMR CODE	CAGEC	PART NUMBER	DESCRIPTION AND USABLE ON CODES(UOC)	QTY
GROUP 02. COMPRESSOR ASSEMBLY					
FIGURE 3. COMPRESSOR CYLINDER HEADS					
1	PAOZZ	55921	C70112-11210	CYLINDER, RECIPROCAT .....	3
2	PAOZZ	55921	C70112-11230	SPRING .....	3
3	PAOZZ	55921	C70112-11220	PISTON, COMPRESSOR .....	3
4	PAOZZ	55921	C93601-87002	PACKING .....	3
5	PAFZZ	55921	C91505-1308025	BOLT, MACHINE.....	10
6	PBFZZ	55921	C70112-11010	CYLINDER HEAD, COMPR.....	2
7	PAFZZ	55921	C70112-11020	GASKET.....	2
8	XDFZZ	55921	C70112-11450	COVER, 1STG OUT V .....	2
9	PAFZZ	55921	C70112-11460	GASKET.....	2
10	PAFZZ	55921	C70112-41070	SPRING, HELICAL, COMP .....	2
11	PAFZZ	55921	C70112-31030	PLATE, OUTLET VALVE.....	2
12	PAFZZ	55921	C93610-130032	RING, RETAINING .....	2
13	PAFZZ	55921	C70112-31020	RECEIVER, INLET VALV .....	2
14	PAFZZ	55921	C70112-31070	SPRING, HELICAL, COMP .....	2
15	PAFZZ	55921	C70112-31030	PLATE, OUTLET VALVE.....	2
16	PBFZF	55921	C70172-12010	CYLINDER HEAD, COMPR.....	1
17	PAFZZ	55921	C70111-11020	GASKET.....	1
18	XDFZZ	55921	C70111-11450	COVER, 2STG OUT V .....	1
19	PAFZZ	55921	C70111-11460	PACKING, PREFORMED.....	1
20	PAFZZ	55921	C70172-42070	SPRING, HELICAL, COMP .....	1
21	PAFZZ	55921	C70111-31030	PLATE, REED VALVE .....	1
22	PAFZZ	55921	C93610-130025	RING, RETAINING .....	1
23	PAFZZ	55921	C70111-31020	RECEIVER, VALVE INLE .....	1
24	PAFZZ	55921	C70172-32070	SPRING, HELICAL, COMP .....	1
25	PAFZZ	55921	C70111-31030	PLATE, REED VALVE.....	1

END OF FIGURE

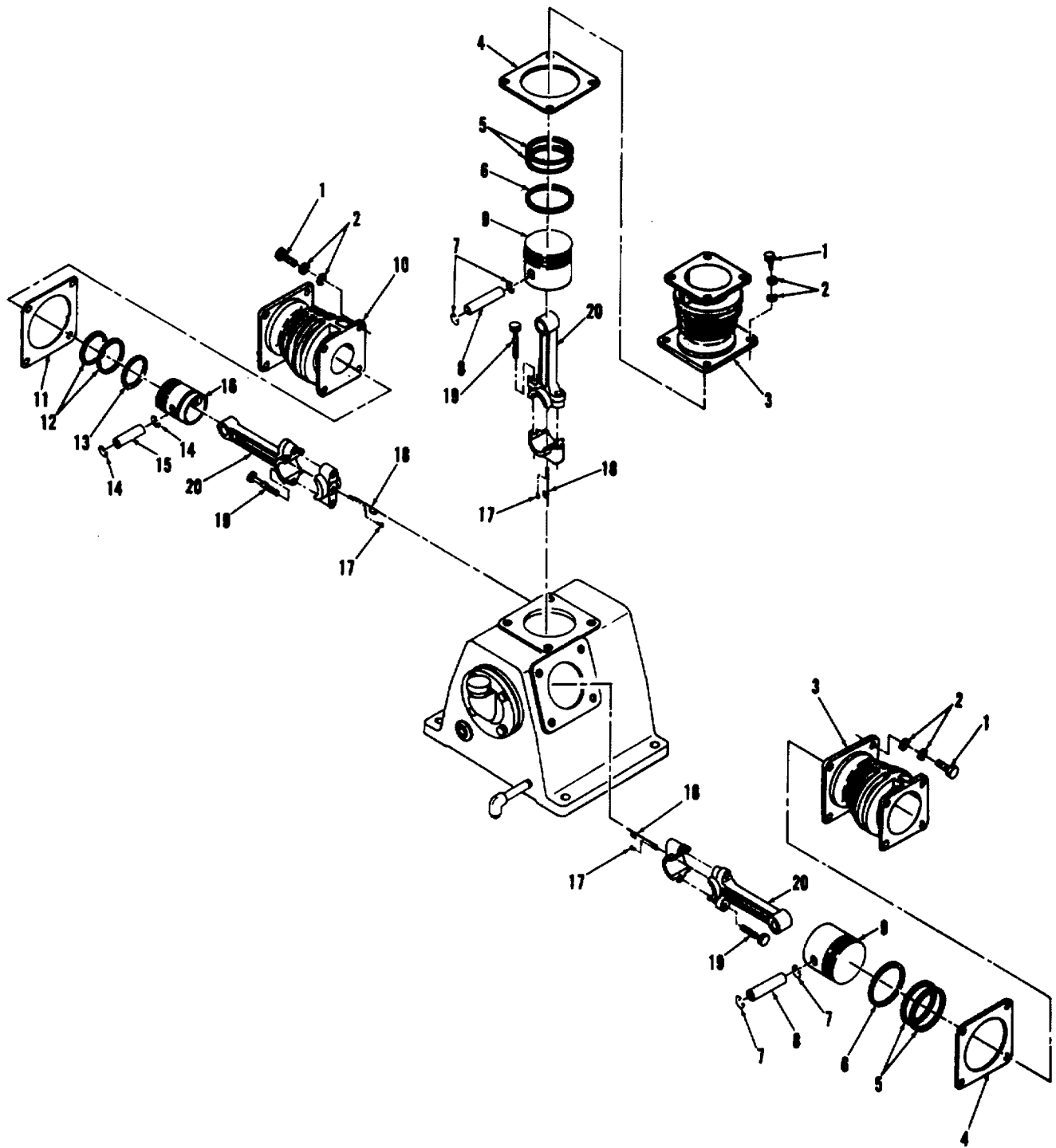


Figure 4. Compressor Cylinders

## SECTION II

TM 5-4310-378-24P

(1)	(2)	(3)	(4)	(5)	(6)
ITEM NO	SMR CODE	CAGEC	PART NUMBER	DESCRIPTION AND USABLE ON CODES(UOC)	QTY
				GROUP 02. COMPRESSOR ASSEMBLY	
				FIGURE 4. COMPRESSOR CYLINDERS	
1	PAFZZ	80204	B18231A08020N	BOLT, MACHINE.....	12
2	PAFZZ	55921	C92521-190800	WASHER, FLAT.....	24
3	XDFZZ	55921	C70112-51010	CYLINDER, 1STG.....	2
4	PAFZZ	55921	C70112-51030	GASKET.....	2
5	PAFZZ	55921	C70112-61030	RING, PISTON.....	4
6	PAFZZ	55921	C70112-61050	RING, PISTON.....	2
7	PAFZZ	55921	C70112-61070	RING, RETAINING.....	4
8	PAFZZ	55921	C70112-61120	PIN, PISTON.....	2
9	PAFZZ	55921	C70112-61010	PISTON, COMPRESSOR.....	2
10	XDFZZ	55921	C70172-52010	CYLINDER, 2STG.....	1
11	PAFZZ	55921	C70112-51030	GASKET.....	1
12	PAFZZ	55921	C70111-61030	RING, PISTON.....	2
13	PAFZZ	55921	C70111-61050	RING, PISTON.....	1
14	PAFZZ	55921	C70112-61070	RING, RETAINING.....	2
15	PAFZZ	55921	C70172-62120	PIN, PISTON.....	1
16	PAFZZ	55921	C70172-62010	PISTON, COMPRESSOR.....	1
17	PBFZZ	55921	C91505-2304010	SCREW, MACHINE.....	3
18	XDFZZ	55921	C70122-61280	DIPPER, OIL SPLASH.....	3
19	PAFZZ	55921	C70112-61250	BOLT, EXTERNALLY REL.....	6
20	PAFZZ	55921	C70112-61200	CONNECTING ROD, PIST.....	3

END OF FIGURE

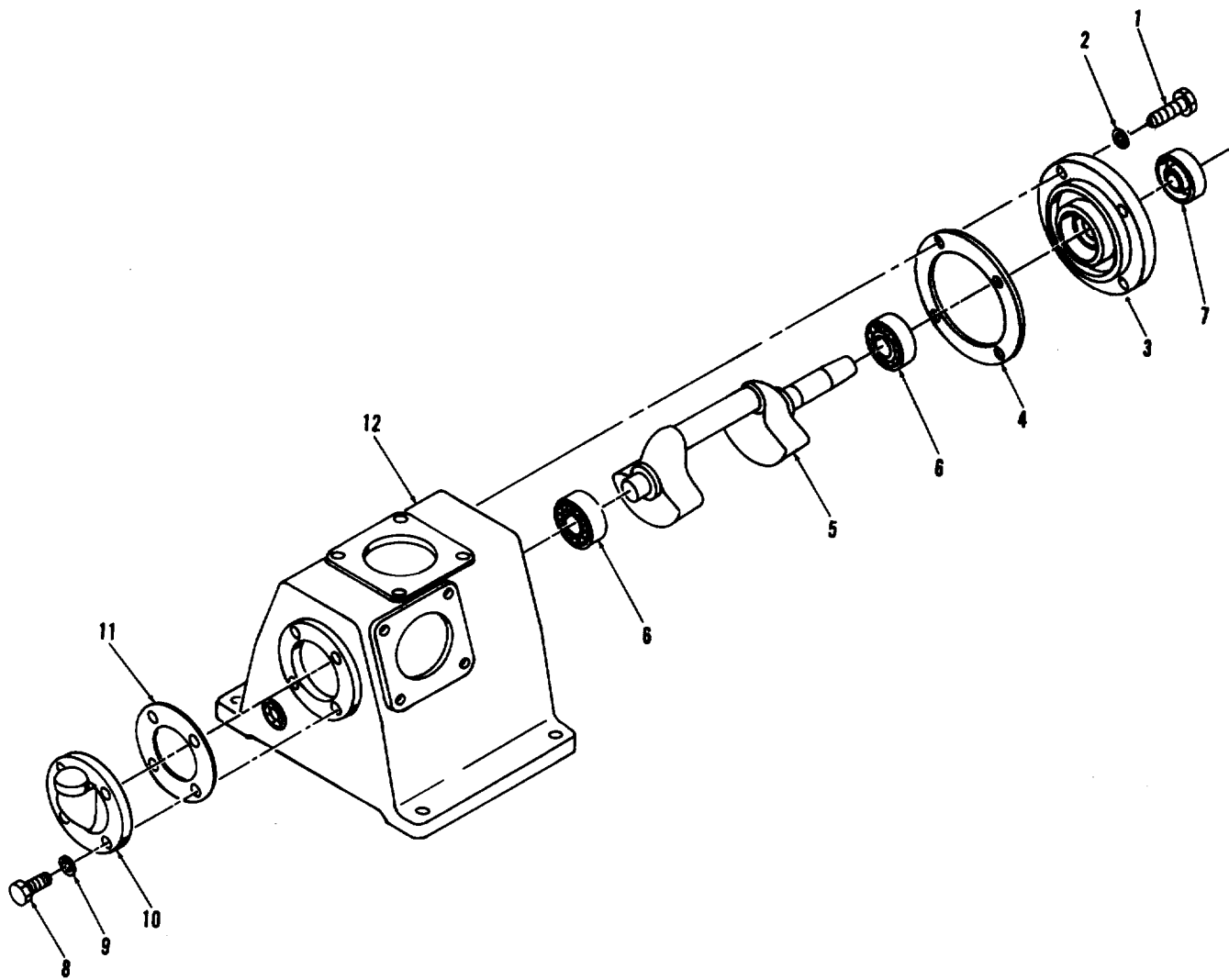


Figure 5. Crankcase

## SECTION II

TM 5-4310-378-24P

(1)	(2)	(3)	(4)	(5)	(6)
ITEM NO	SMR CODE	CAGEC	PART NUMBER	DESCRIPTION AND USABLE ON CODES(UOC)	QTY
				GROUP 02.COMPRESSOR ASSEMBLY	
				FIGURE 5.CRANKCASE	
1	PAFZZ	80204	B18231A08020N	BOLT, MACHINE.....	4
2	PAFZZ	55921	C92521-190800	WASHER, FLAT.....	4
3	XDFZZ	55921	C70122-57030	COVER, FRONT BEARING.....	1
4	PAFZZ	55921	C70122-57040	GASKET.....	1
5	XDFZZ	55921	C70132-56010	CRANKSHAFT .....	1
6	PAFZZ	21760	1205	BEARING, BALL, ANNULA .....	2
7	PAFZZ	55921	C70122-57080	SEAL, PLAIN ENCASED.....	1
8	PAFZZ	80204	B18231A08020N	BOLT, MACHINE.....	4
9	PAFZZ	55921	C92521-190800	WASHER, FLAT.....	4
10	PAFZZ	55921	C70122-57060	COVER, REAR BEARING.....	1
11	PAFZZ	55921	C70122-57070	GASKET.....	1
12	XDFZZ	55921	C70132-57010A	CRANKCASE .....	1

END OF FIGURE



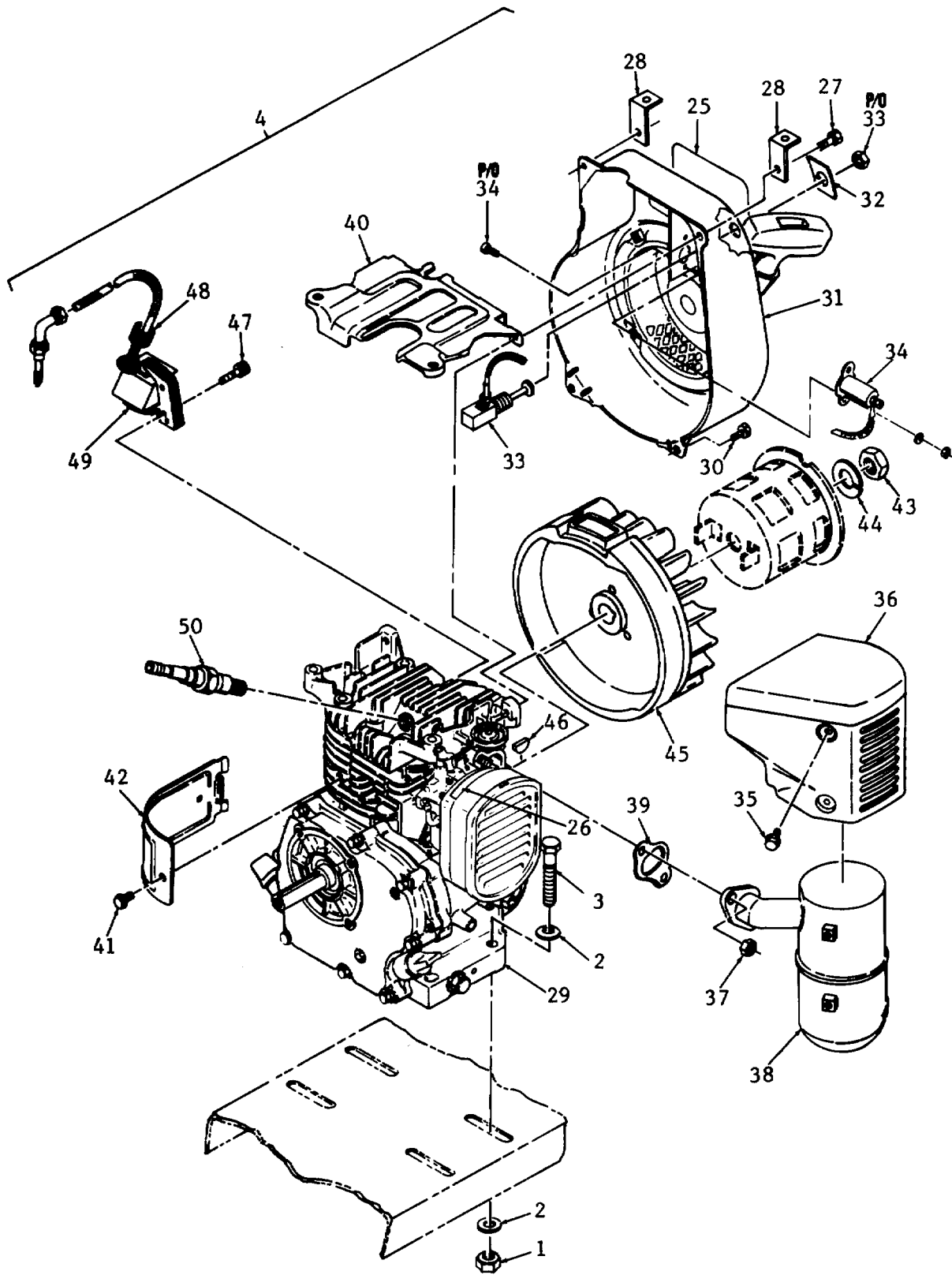


Figure 6. EMI Kit, Flywheel Shroud, and Flywheel  
(Sheet 1 of 2)

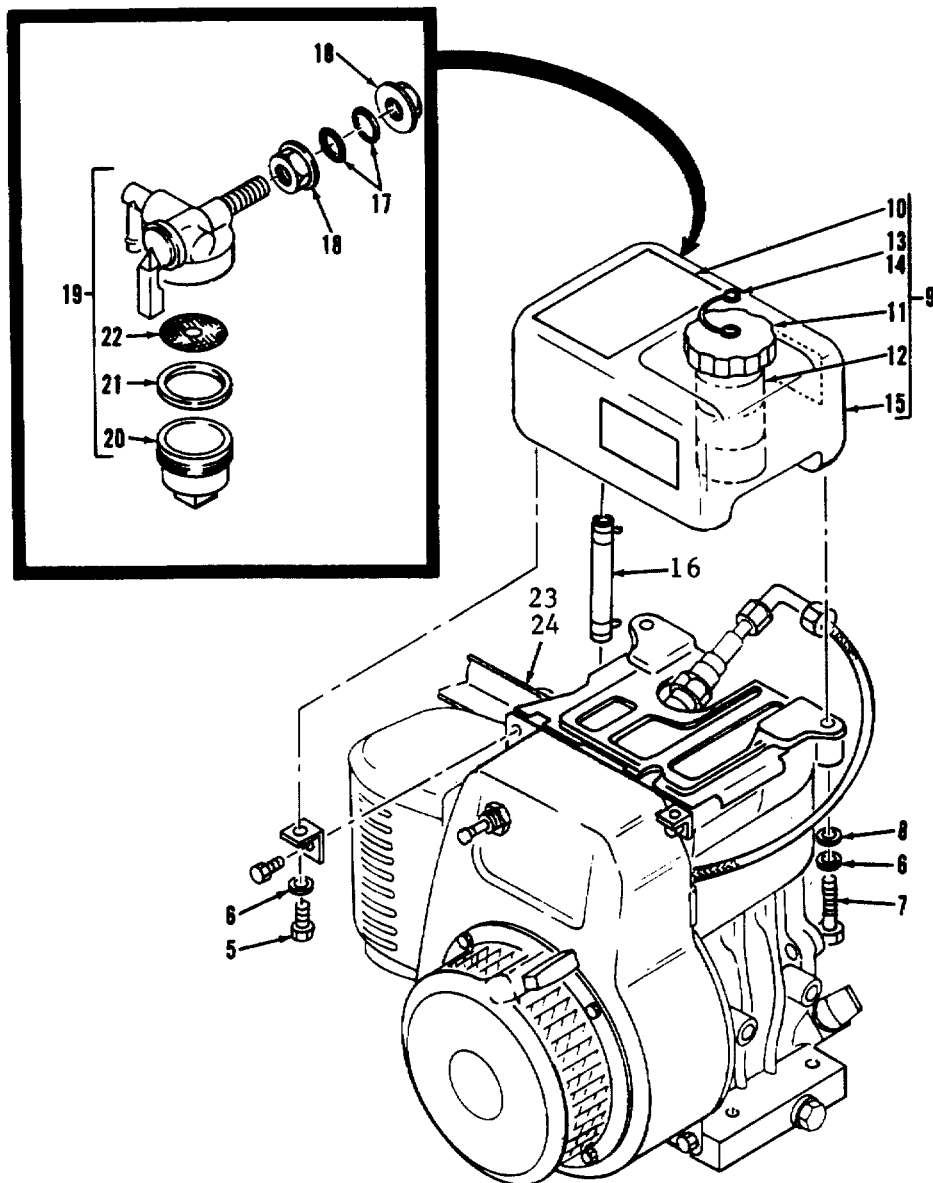


Figure 6. EMI Kit, Flywheel Shroud, and Flywheel  
(Sheet 2 of 2)

(1)	(2)	(3)	(4)	(5)	(6)
ITEM NO	SMR CODE	CAGEC	PART NUMBER	DESCRIPTION AND USABLE ON CODES(UOC)	QTY
GROUP 03. ENGINE ASSEMBLY					
FIGURE 6. EMI KIT FLYWHEEL SHROUD AND FLYWHEEL					
1	PAOZZ	96906	MS16228-5C	NUT, SELF-LOCKING, HE .....	4
2	PAOZZ	96906	MS15795-812	WASHER, FLAT.....	8
3	PAOZZ	96906	MS35307-339	BOLT, MACHINE.....	4
4	AFOFH	58328	ZPC1000002	ENGINE, GASOLINE .....	1
5	PAOZZ	96906	MS35307-303	SCREW, CAP, HEXAGON H.....	2
6	PAOZZ	96906	MS35338-139	WASHER, LOCK.....	4
7	PAOZZ	96906	MS35307-308	SCREW, CAP, HEXAGON H.....	2
8	PAOZZ	96906	MS15795-810	WASHER, FLAT.....	2
9	PAOZZ	58328	ZPC1000026	TANK, FUEL, ENGINE .....	1
10	XCOZZ	58328	ZPC1000033	LABEL, OPERATION .....	1
11	PAOZZ	23224	CAP70500SL	.CAP, FILLER OPENING.....	1
12	PAOZZ	66036	39940	.STRAINER ELEMENT, SE.....	1
13	PAOZZ	96906	MS35333-73	WASHER, LOCK.....	1
14	PAOZZ	96906	MS51958-61	SCREW, MACHINE.....	1
15	PAOZZ	58328	ZPC1000041	.TANK, FUEL, ENGINE .....	1
16	PAOZZ	66289	EY2276264001	FUEL LINE ASSEMBLY .....	2
17	PAOZZ	66289	EY0643000118	STRAP, MOUNTING RUBB .....	1
18	PAOZZ	66289	EY0642004260	LOCKNUT, TUBE FITTIN.....	1
19	PAOZZ	66289	EY0642006400	STRAINER ASSY , FUEL.....	1
20	KFOZZ	66289	EY0642004210	BOWL PART OF KIT P/N EY2266230407.....	1
21	KFOZZ	66289	EY0642004230	GASKET PART OF KIT P/N EY2266230407.....	1
22	KFOZZ	66289	EY0642004220	SCREEN PART OF KIT P/N EY2266230407.....	1
23	PAOZZ	96906	MS51958-61	SCREW, MACHINE.....	1
24	XDOZZ	58328	ZPC1000048	.BRACKET, FRONT STRUT.....	1
25	XCOZZ	58328	ZPC1000038	.LABEL, ENGINE.....	1
26	XCOZZ	58328	ZPC1000032	.LABEL,CHOKE DIR.....	1
27	PAOZZ	66289	EY0110060030	.SCREW, SELF-LOCKING .....	1
28	XDOZZ	58328	ZPC1000029	.BRACKET, FUEL TANK .....	2
29	PAOFH	66289	800392	.ENGINE.GASOLINE .....	1
30	PAOZZ	66289	EY0110060020	.SCREW, SELF-LOCKING .....	2
31	XDOZZ	66289	SKM10-0010	.SHROUD, FLYWHEEL.....	1
32	XDOZZ	58328	ZPC1000063	..SCREW-WASHER, HEX HD.....	1
33	PAOZZ	66289	YC9FS1	..SWITCH, PUSH-PULL .....	1
34	XDOZZ	66289	SKM10-0011	..FILTER, COAXIAL.....	1
35	PAOZZ	66289	EY0110060010	.SCREW, SELF- LOCKING .....	1
36	PAOZZ	66289	EY2273420101	.SHROUD, MUFFLER .....	1
37	PAOZZ	66289	EY0C21908000	.NUT, PLAIN, HEXAGON .....	1
38	PAOZZ	66289	EY2273010101	.MUFFLER, EXHAUST .....	2
39	KFOZZ	66289	EY12143520111	.GASKET, MUFFLER MTG PART OF KIT P/N..... EY2279900207.....	1 1
40	PAOZZ	66289	EY2275270103	.COVER, CYLINDER HD .....	1
41	PAOZZ	66289	EY0110060010	.SCREW, SELF-LOCKING .....	1
42	PAOZZ	66289	EY2275260103	.BAFFLE.A'RFLOW .....	1
43	PAOZZ	66289	EY0021814000	NUT, PLAIN, HEXAGON .....	1

## SECTION II

TM 5-4310-378-24P

(1)	(2)	(3)	(4)	(5)	(6)
ITEM NO	SMR CODE	CAGEC	PART NUMBER	DESCRIPTION AND USABLE ON CODES(UOC)	QTY
44	PAOZZ	66289	BY0032014000	WASHER, LOCK.....	1
45	PBOZZ	66289	EY2277012108	.FLYWHEEL, ENGINE.....	1
46	PAOZZ	66289	EY0323030010	KEY, WOODRUF .....	1
47	PAOZZ	66289	EY0011706250	.SCREW-WASHER, X H D.....	2
48	PAOZZ	66289	EY226702450B	.GROMMT, NONM ETA LLIC.....	1
49	XDOZZ	66289	EY227013028	.EMI COIL .....	1
50	PAOZZ	96906	MS35909-4	..SPA PLU .....	1
51	PAOZZ	66289	EY2266230407	REPAIR KIT, FUEL STR .....	1
				BOWL ( 1) 6-20	
				GASKET ( 1) 6-21	
				SCREEN ( 1) 6-22	

END OF FIGURE

Change 2 6-2

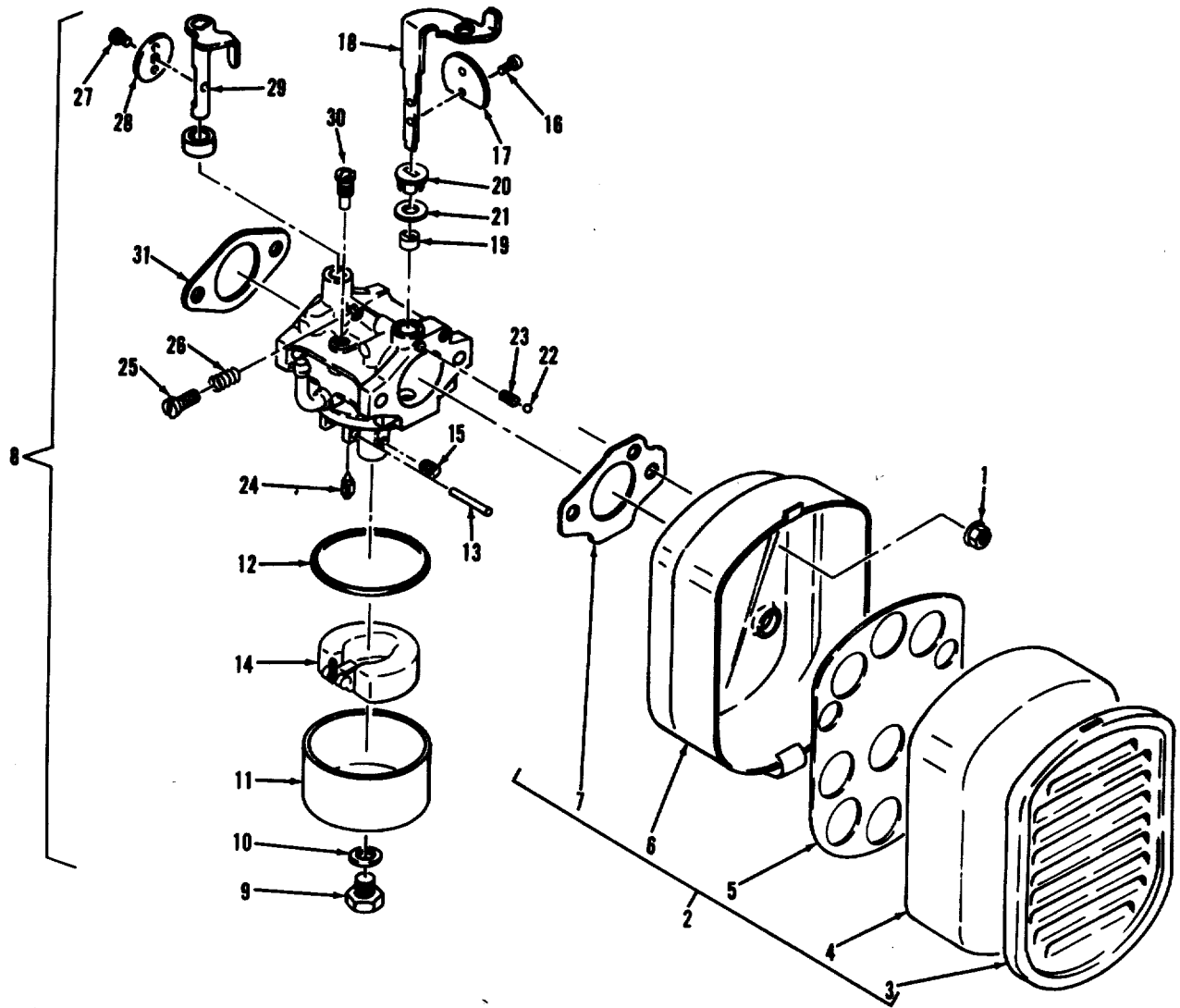


Figure 7. Air Cleaner and Carburetor

## SECTION II

TM 5-4310-378-24P

(1)	(2)	(3)	(4)	(5)	(6)
ITEM NO	SMR CODE	CAGEC	PART NUMBER	DESCRIPTION AND USABLE ON CODES(UOC)	QTY
GROUP 03. ENGINE ASSEMBLY FIGURE 7. AIR CLEANER AND CARBURETOR					
1	PAOZZ	66289	EY0023806000	NUT, SELF-LOCKING, HE .....	2
2	PAOZZ	66289	EY2273260100	AIR CLEANER, INTAKE .....	1
3	PBOZZ	66289	EY2273510101	.COVER .....	1
4	PAOZZ	66289	EY2273600203	.FILTER ELEMENT, INTA .....	1
5	XAOZZ	66289	EY2273600103	.RETAINER .....	1
6	XAOZZ	66289	EY2273500101	.BODY .....	1
7	KFOZZ	66289	EY2273600313	GASKET PART OF KIT P/N EY2276230107 .....	1
				PART OF KIT P/N EY2266230217 PART OF KIT P/N EY2279900207 .....	
8	PAOZZ	66289	EY2276232600	CARBURETOR ASSEMBLY .....	1
9	KFOZZ	66289	EY2146245108	SCREW, FLT CHMBR MTG PART OF KIT P/N ... EY2276230107 .....	1
10	KFOZZ	66289	EY2146245008	WASHER, FLT CHMBR PART OF KIT P/N..... EY2276230107 PART OF KIT P/ EY2266230217 .....	1
11	XAOZZ	66289	EY2146255108	.CHAMBER, FLOAT .....	1
12	KFOZZ	66289	EY2146254008	GASKET, FLT CHMBR PART OF KIT P/N..... EY2276230107 PART OF KIT P/N EY2266230217 .....	1
13	KFOZZ	66289	EY2146251508	PIN, FLOAT PART OF KIT P/N .....	1
14	XAOZZ	66289	EY2266250508	.FLOAT .....	1
15	KFOZZ	66289	EY2276240008	JET, MAIN PART OF KIT P/N .....	1
16	KFOZZ	66289	EY2266235108	SCREW, PAN HEAD PART OF KIT P/N .....	2
				EY2096244608 .....	
17	XAOZZ	66289	EY2266252508	.VALVE, CHOKE .....	1
18	XAOZZ	66289	EY2266230507	.SHAFT, CHOKE .....	1
19	XAOZZ	66289	EY2266255008	..BSGH, LWR CH SHAFT .....	1
20	XAOZZ	66289	EY2266255108	..BSGH, UPR CH SHAFT .....	1
21	KFOZZ	66289	EY2276255008	GASKET, CHOKE SHAFT PART OF KIT P/N..... EY2276230107 PART OF KIT P/N EY2266230217 .....	1
22	XAOZZ	66289	EY2096235308	.BALL, CH SHAFT RTNR .....	1
				JET, MAIN ( 1) 7-10	
				SCREW, PAN HEAD ( 2) 7-20	
23	XAOZZ	66289	EY2096244608	.SPRING, CH BALL RTNR .....	1
24	KFOZZ	66289	EY2266250008	VALVE ASSY, FUEL PART OF KIT P/N..... EY2276230107 .....	1
25	KFOZZ	66289	EY1066239308	SCREW, THROTTLE STOP PART OF KIT P/N... EY2276230107 .....	1
26	PAOZZ	66289	EY2096244508	.SPRING, HELICAL, COMP .....	1
27	KFOZZ	66289	EY1506235608	SCREW, THROT VALVE PART OF KIT P/N..... EY2276230107 .....	1
28	XAOZZ	66289	EY2206253508	.VALVE, THROTTLE .....	1
29	XAOZZ	66289	EY2266253008	.SHAFT, THROTTLE .....	1
30	KFOZZ	66289	EY2096242008	JET, PILOT PART OF KIT EY2276230107.....	1

## SECTION II

TM 5-4310-378-24P

(1)	(2)	(3)	(4)	(5)	(6)
ITEM NO	SMR CODE	CAGEC	PART NUMBER	DESCRIPTION AND USABLE ON CODES(UOC)	QTY
31	KFOZZ	66289	EY2273590203	PART OF KIT P/N EY2276230107. GASKET, CARB FLANGE PART OF KIT P/N ..... EY2276230107 PART OF KIT P/N EY2266230217.	1
	PAOZZ	66289	EY2276230107	REPAIR KIT , CARBURET ..... GASKET ( 1).....7-10 GASKET, CHOKE SHAFT ( 1) 7-20 GASKET, CARB FLANGE ( 1) 7-30 GASKET, FLT CHMBR ( 1) 7-40 JET, PILOT ( 1) 7-50 PIN, FLOAT ( 1) 7-60 SCREW, FLT CHMBR MTG( 1) 7-70 SCREW, THROTTLE STOP( 1) 7-80 SCREW, THROT VALVE ( 1) 7-90 VALVE ASSY, FUEL ( 1) 7-100 WASHER, FLT CHMBR ( 1) 7-50	1
	PAOZZ	66289	EY2266230217	GASKET SET, CARBURET ..... GASKET ( 1) 7-10 GASKET, CHOKE SHAFT ( 1) 7-20 GASKET, CARB FLANGE ( 1) 7-30 GASKET, FLT CHMBR ( 1) 7-40 WASHER, FLT CHMBR ( 1) 7-50	1

END OF FIGURE

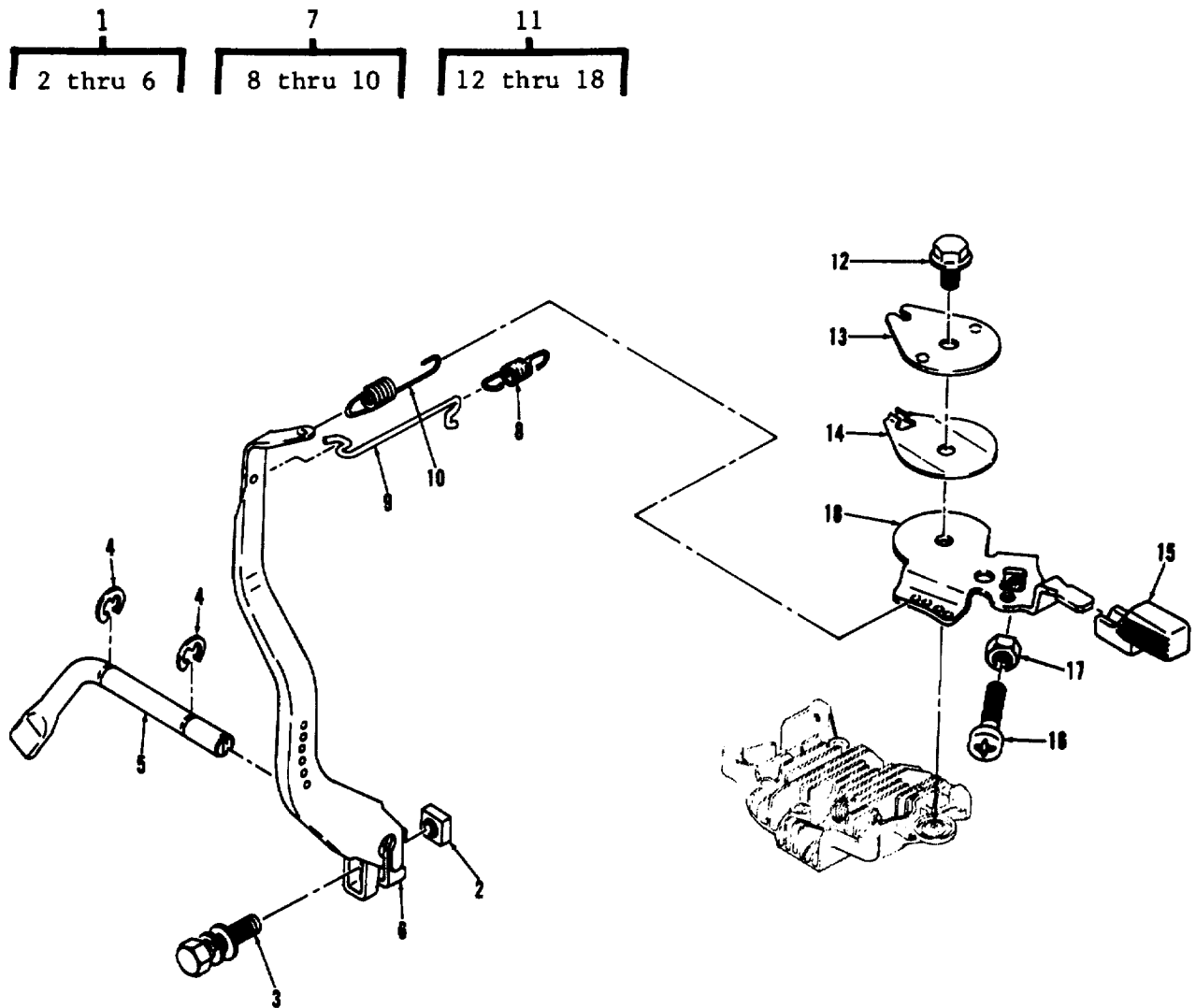


Figure 8. Governor Lever, Spring, and Rod Sets



## SECTION II

TM 5-4310-378-24P

(1)	(2)	(3)	(4)	(5)	(6)
ITEM NO	SMR CODE	CAGEC	PART NUMBER	DESCRIPTION AND USABLE ON CODES(UOC)	QTY
GROUP 03. ENGINE ASSEMBLY					
FIGURE 8. GOVERNOR LEVER, SPRING AND ROD SETS					
1	PBFZZ	66289	EY2274230107	SHAFT SET, LEVER.....	1
2	XAFZZ	66289	EY0186060010	.NUT, GOVERNOR LEVER.....	1
3	XAFZZ	66289	EY0032006000	.SCREW-WASHER ASSY.....	1
4	XAFZZ	66289	EY0031306000	.CLIP, SHAFT RETAINER.....	2
5	XAFZZ	66289	EY2274220103	.SHAFT, CROSS.....	1
6	XAFZZ	66289	EY2274230101	.LEVER, GOVERNOR.....	1
7	PAFZZ	66289	EY2274250107	ROD SET, GOVERNOR.....	1
8	PAOZZ	66289	EY2274280101	.SPRING, HELICAL, EXTE.....	1
9	XAOZZ	66289	EY2274270101	.ROD, GOVERNOR.....	1
10	PAOZZ	66289	EY2274250111	.SPRING, HELICALPEXTE.....	1
11	PAOZZ	66289	EY2274330107	LEVER SET, CONTROL G.....	1
12	XAOZZ	66289	EY0110060030	.SCREW, SELF-LOCKING.....	1
13	XAOZZ	66289	EY2274350101	.PLATE, STOP.....	1
14	XAOZZ	66289	EY2274500203	.WASHER, STOP PLATE.....	1
15	XAOZZ	66289	EY2274360103	.HANDLE, CONT LEVER.....	1
16	XAOZZ	66289	EY0043106300	.SCREW, FILLISTER H D.....	1
17	XAOZZ	66289	EY0022706000	.NUT, HEX.....	1
18	XAOZZ	66289	EY2274330101	.LEVER, CONTROL.....	1

END OF FIGURE

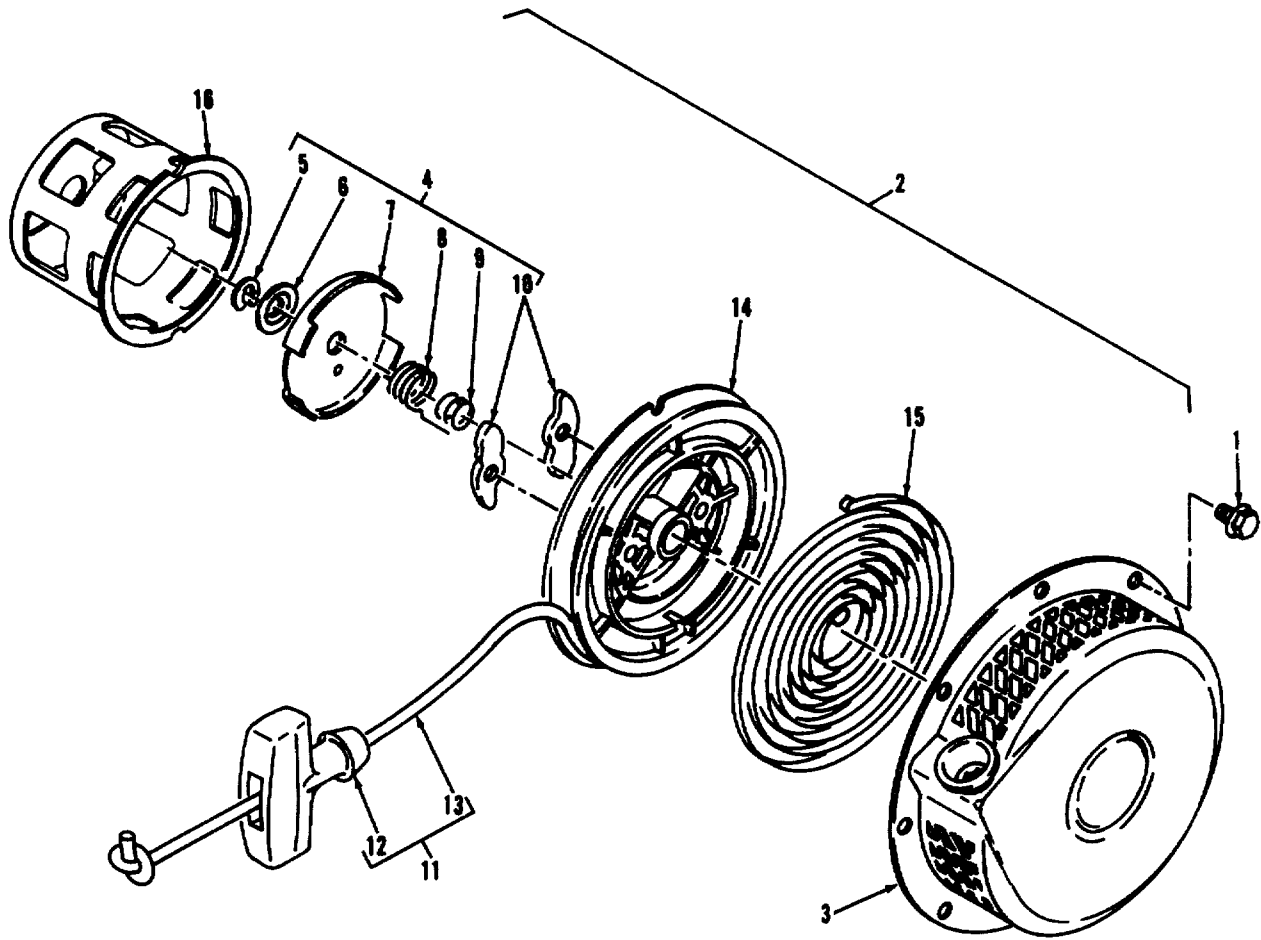


Figure 9. Recoil Starter Assembly

## SECTION II

TM 5-4310-378-24P

(1)	(2)	(3)	(4)	(5)	(6)
ITEM NO	SMR CODE	CAGEC	PART NUMBER	DESCRIPTION AND USABLE ON CODES(UOC)	QTY
				GROUP 03. ENGINE ASSEMBLY	
				FIGURE 9. RECOIL STARTER ASSEMBLY	
1	PAOZZ	66289	EY0110060010	SCREW, SELF-LOCKING .....	4
2	PBOFF	66289	EY2275021100	STARTER, ENGINE, HAND .....	1
3	XAOZZ	66289	EY2275153601	HOUSING .....	1
4	PAOZZ	66289	EY2265010107	HARDWARE KIT, STARTE .....	1
5	XAOZZ	66289	EY1065018608	.CLIP, RETAINER LOCK.....	1
6	XAOZZ	66289	EY1065018508	.WASHER, RETAINER.....	1
7	XAOZZ	66289	EY1065014408	.RETAINER, RATCHET.....	1
8	XAOZZ	66289	EY1065013618	.SPRING, RETURN.....	1
9	XAOZZ	66289	EY1065013208	.SPRING, COMPRESSION .....	1
10	XAOZZ	66289	EY1065012818	.RATCHET .....	2
11	PAOZZ	66289	EY2275010508	STARTER ROPE, ENGINE .....	1
12	XAOZZ	66289	EY2265010008	.BUSHING, HANDLE AND .....	1
13	XAOZZ	66289	EY2275011008	.ROPE.....	1
14	PAOZZ	66289	EY2275012008	.PULLEY, ENGINE START.....	1
15	PAOZZ	66289	EY1065011608	SPRING, SPIRAL, TORSI .....	1
16	PAOZZ	66289	EY2275014508	PULLEY, STARTING.....	1

END OF FIGURE

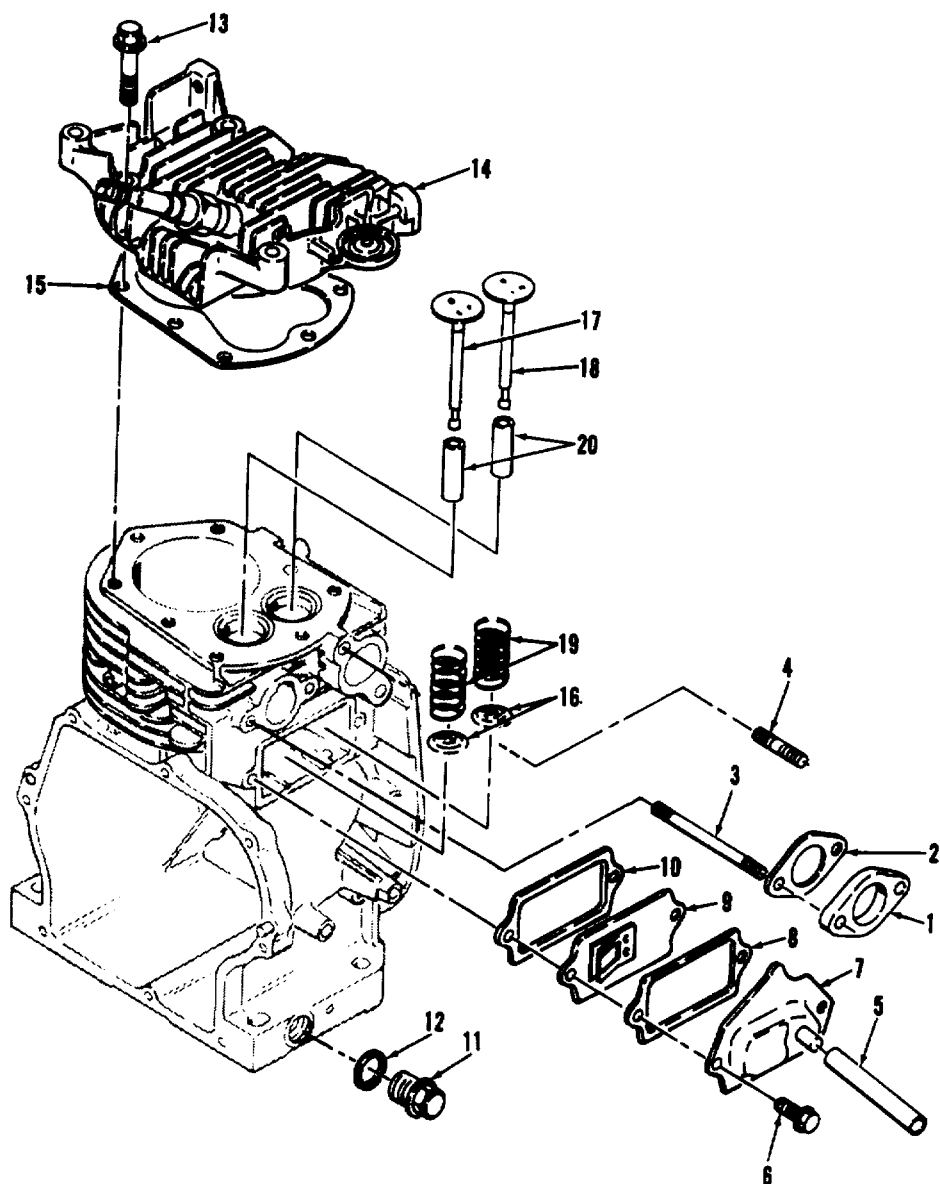


Figure 10. Piston, Connecting Rod and Crankshaft

## SECTION II

TM 5-4310-378-24P

(1)	(2)	(3)	(4)	(5)	(6)
ITEM NO	SMR CODE	CAGEC	PART NUMBER	DESCRIPTION AND USABLE ON CODES(UOC)	QTY
				GROUP 03. ENGINE ASSEMBLY	
				FIGURE 10. PISTON, CONNECTING ROD AND CRANKSHAFT	
1	PAOZZ	66289	EY2273290103	INSULATING PLATE, CA.....	1
2	KFOZZ	66289	EY2273590103	GASKET, INSUL PLATE PART OF KIT P/N.....	1
				EY2279900207 .....	
3	PBOZZ	66289	EY0105060120	ROD, THREADED END.....	2
4	PBOZZ	66289	EY0105080250	ROD, THREADED END.....	2
5	PAOZZ	66289	EY0851080210	TUBE, BREATHER .....	1
6	PAOZZ	66289	EY0110060020	SCREW, SELF-LOCKING .....	2
7	XDOZZ	66289	EY2271430101	COVER, VALVE TAPPET .....	1
8	KFOZZ	66289	EY2271600603	GSKT, TPT INSP COVER PART OF KIT P/N .....	1
				EY2279900207 .....	
9	XDOZZ	66289	EY2271440101	PLATE, BREATHER.....	1
10	KFOZZ	66289	EY2271600703	GSKT, BREATHER PLATE PART OF KIT P/N.....	1
				EY2279900207 .....	
11	PAOZZ	66289	EY2276360007	PLUG, MACHINE THREAD.....	2
12	PAOZZ	66289	EY0211140020	.GASKET.....	2
13	PAOZZ	66289	EY0110080010	SCREW, SELF-LOCKING .....	8
14	XDOZZ	66289	EY2271300103	HEAD, CYLINDER.....	1
15	KFOZZ	66289	EY2271500101	GASKET, CYLINDER HD PART OF KIT P/N .....	1
				EY2279900207 .....	
16	PAOZZ	66289	EY2273370103	SEAT, HELICAL COMPRE.....	2
17	PAOZZ	66289	EY2273340103	VALVE, POPPET, ENGINE.....	1
18	PAOZZ	66289	EY2273350103	VALVE, POPPET, ENGINE.....	1
19	PAOZZ	66289	EY2273360103	SPRING, HELICAL, COMP .....	2
20	PAOZZ	66289	EY2271420203	GUIDE, VALVE STEM.....	2

END OF FIGURE

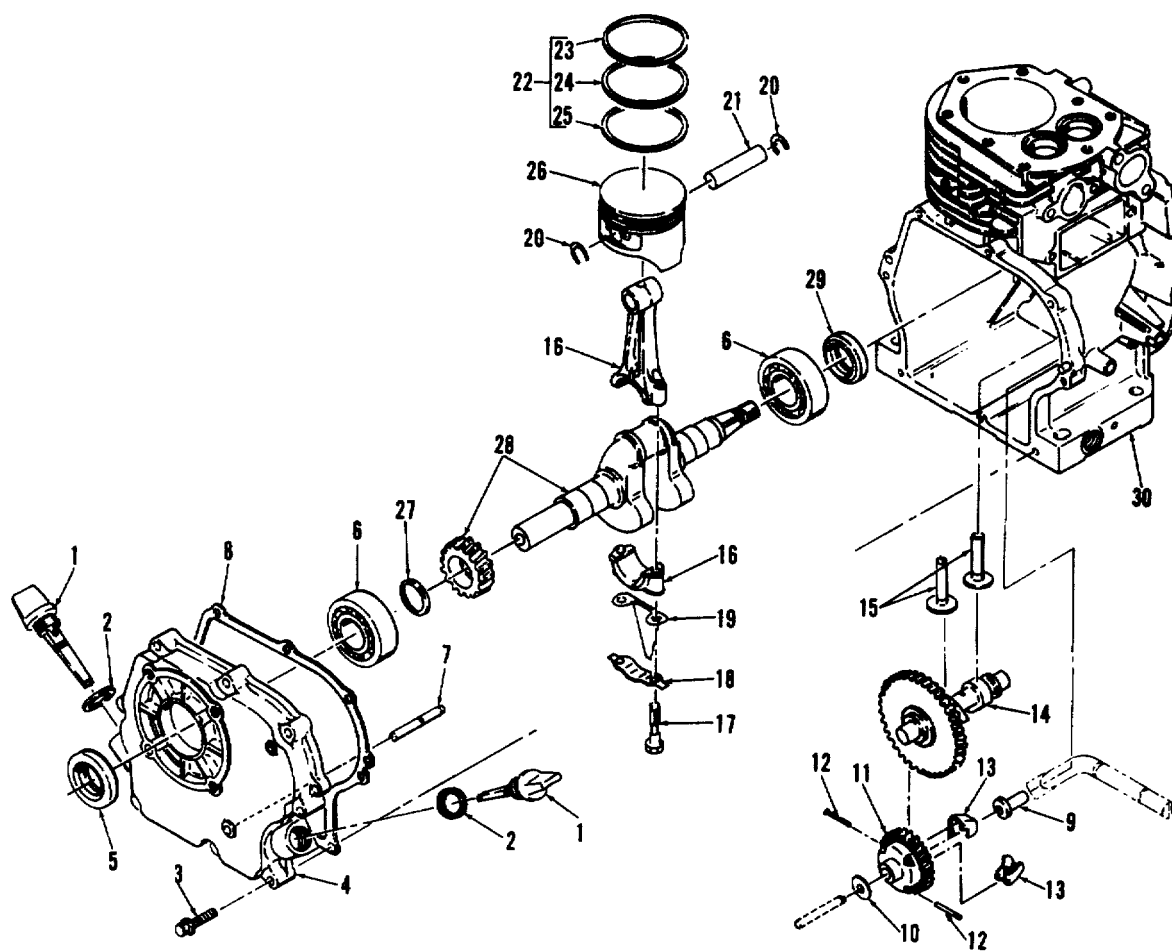


Figure 11. Crankcase

## SECTION II

TM 5-4310-378-24P

(1)	(2)	(3)	(4)	(5)	(6)
ITEM NO	SMR CODE	CAGEC	PART NUMBER	DESCRIPTION AND USABLE ON CODES (UOC)	QTY
GROUP 03. ENGINE ASSEMBLY					
FIGURE 11. CRANKCASE					
1	PAOZZ	66289	EY2276360107	GAGE ROD-CAP, LIQUID.....	2
2	PAOZZ	66289	EY0213160010	.GASKET.DIP STICK .....	1
3	PAOZZ	66289	EY0130060040	SCREW-WASHER, HEXAGO .....	8
4	XDOZZ	66289	EY2271100201	COVER ASSY, GEAR .....	1
5	PAOZZ	66289	EY0440250020	.SEAL, GEAR COVER OIL.....	1
6	PAFZZ	66289	EY0600250010	.BEARING, MAIN, CRANKS.....	1
7	XAFZZ	66289	EY2054600703	.SHAFT, GOVERNOR GEAR.....	1
8	KFFZZ	66289	EY2271600103	GASKET, GEAR COVER PART OF KIT P/N..... EY2279900207.	1
9	XAFZZ	66289	EY2054190103	SLEEVE, GOVERNOR.....	1
10	XAFZZ	66289	EY0230060010	SPACER, GEAR.....	1
11	XAFZZ	66289	EY2274500301	GEAR ASSY, GOVERNOR .....	1
12	XAFZZ	66289	EY0307300070	.PINFLYWEIGHT PH .....	2
13	XAFZZ	66289	EY2204160103	.FLYWEIGHT. ....	2
14	XAFZZ	66289	EY2273170103	CAMSHAFT, GEAR ASSY .....	1
15	XAFZZ	66289	EY2273330103	TAPPET, VALVE .....	2
16	XAFZZ	66289	EY2272250100	CONN, ROD ASSY .....	1
17	XAFZZ	66289	EY2272300103	.BOLT, ROD.....	2
18	XAFZZ	66289	EY2272320103	.PLATE, LOCK .....	1
19	XAFZZ	66289	EY2272310103	.SCRAPER, OIL .....	1
20	XAFZZ	66289	EY0565140010	RING, PSTN PIN SNAP .....	2
21	XAFZZ	66289	EY2142330103	PIN, PISTON.....	1
22	XAFZZ	66289	EY2272350107	RING SET, STANDARD .....	1
23	XAFZZ	66289	EY2262360103	.RING, COMPRESSION.....	1
24	XAFZZ	66289	EY2262371107	.RING, SCRAPER .....	1
25	XAFZZ	66289	EY2262391103	.RING, OIL .....	1
26	XAFZZ	66289	EY2272340103	PISTON, STANDARD.....	1
27	XAFZZ	66289	EY0230250110	SHIM .....	1
28	XAFZZ	66289	EY2272090201	CRANKSHAFT, KEYWAY .....	1
29	XAFZZ	66289	EY0440250070	SEAL, CRANKCASE OIL.....	1
30	XAFZZ	66289	EY227101010	CRANKCASE, CYLINDER.....	1
	PAFZZ	66289	EY2279900207	GASKET SET.....	1
				GASKET ( 1) 7-10	
				GASKET, CYLINDER HD ( 1) 10-20	
				GASKET, GEAR COVER ( 1) 11-30	
				GASKET, INSUL PLATE ( 1) 10-40	
				GASKET, MUFFLER MTG ( 1) 6-50	
				GSKT, BREATHER PLATE ( 1) 10-60	
				GSKT, TPT INSP COVER ( 1) 10-70	

END OF FIGURE

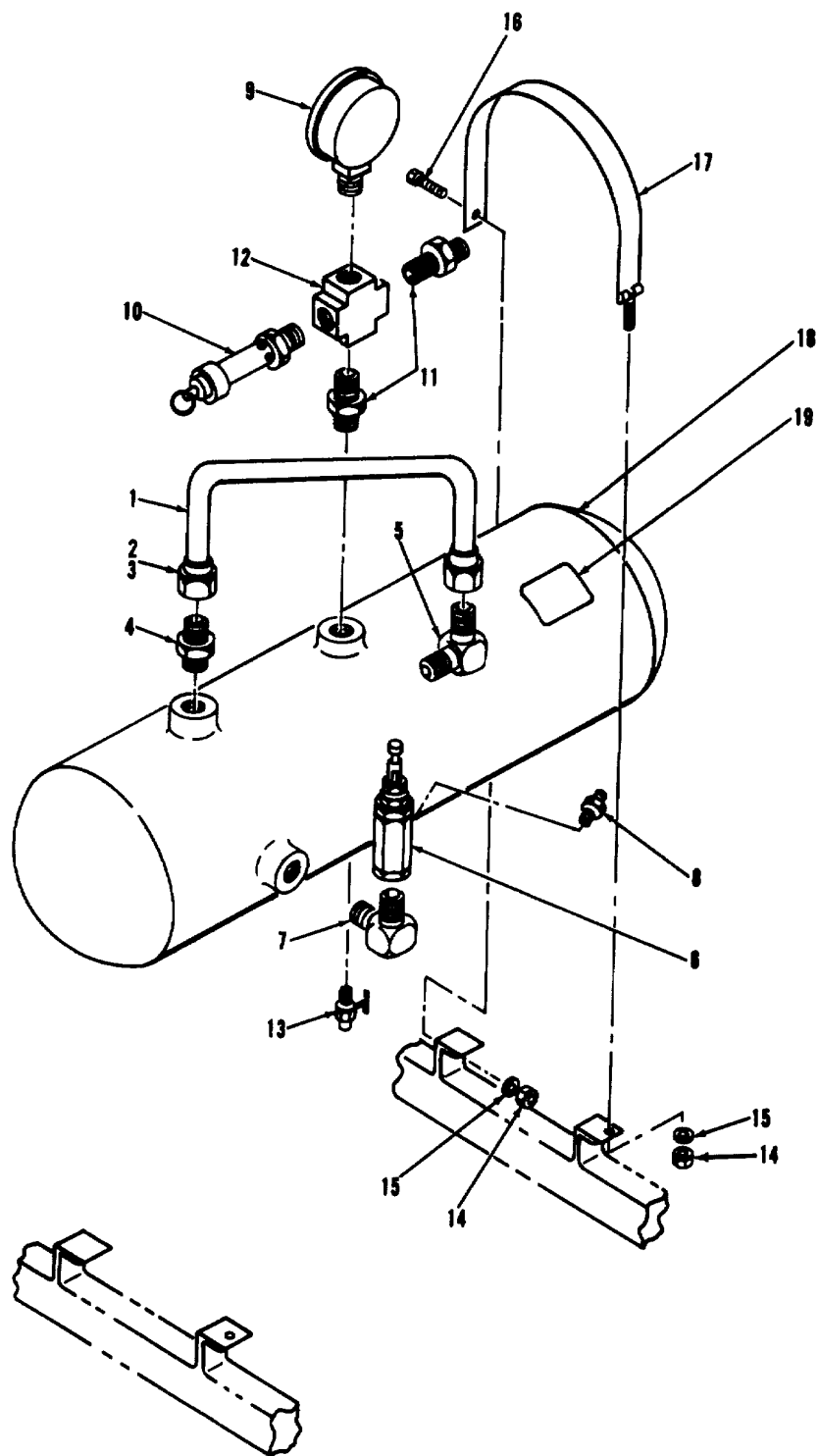


Figure 12. Gauge, Valves, and Air Tank Assembly



## SECTION II

TM 5-4310-378-24P

(1)	(2)	(3)	(4)	(5)	(6)
ITEM NO	SMR CODE	CAGEC	PART NUMBER	DESCRIPTION AND USABLE ON CODES(UOC)	QTY
GROUP 04. AIR RECEIVER SYSTEM					
FIGURE 12. GAUGE, VALVES AND AIR TANK ASSEMBLY					
1	PAOZZ	58328	ZPC1000024	TUBE ASSEMBLY, METAL.....	1
2	PAOZZ	96906	MS39177-7	SLEEVE, COMPRESSION, .....	2
3	PAOZZ	96906	MS39176-7	NUT, TUBE COUPLING .....	2
4	PAOZZ	93061	68C-8-8	ADAPTER, STRAIGHT, PI .....	1
5	PAOZZ	96906	MS39171-17	ELBOW, PIPE TO TUBE.....	1
6	PAOZZ	71647	RCB-HU-165-185	VALVE, PILOT .....	1
7	PAOZZ	30780	1/4X1/4CR-B	ELBOW .....	1
8	PAOZZ	92392	0910197	ADAPTER, STRAIGHT, PI .....	1
9	PAOZZ	61349	P500 1/4LM2IN-30 OPSI	GAGE, PRESSURE, DIAL.....	1
10	PAOZZ	17875	95202-200-ASME	VALVE, SAFETY RELIEF.....	1
11	PAOZZ	30780	1/4X1/4FF-S	NIPPLE, PIPE .....	2
12	PAOZZ	30780	1/4KMMOO-S	CROSS, PIPE .....	1
13	PAOZZ	25299	2305X2	VALVE, DRAIN.....	1
14	PAOZZ	96906	MS16228-4C	NUT, SELF-LOCKING, HE .....	4
15	PAOZZ	96906	MS15795-810	WASHER, FLAT .....	6
16	PAOZZ	96906	MS35307-306	SCREW, CAP, HEXAGON H.....	2
17	PAOZZ	58328	ZPC1000010	STRAP, RETAINING .....	2
18	XDOZZ	58328	ZPC1000007	TANK ASSY, AIR .....	1
19	XCOZZ	58328	ZPC1000031	.LABEL, AIR TANK.....	1

END OF FIGURE

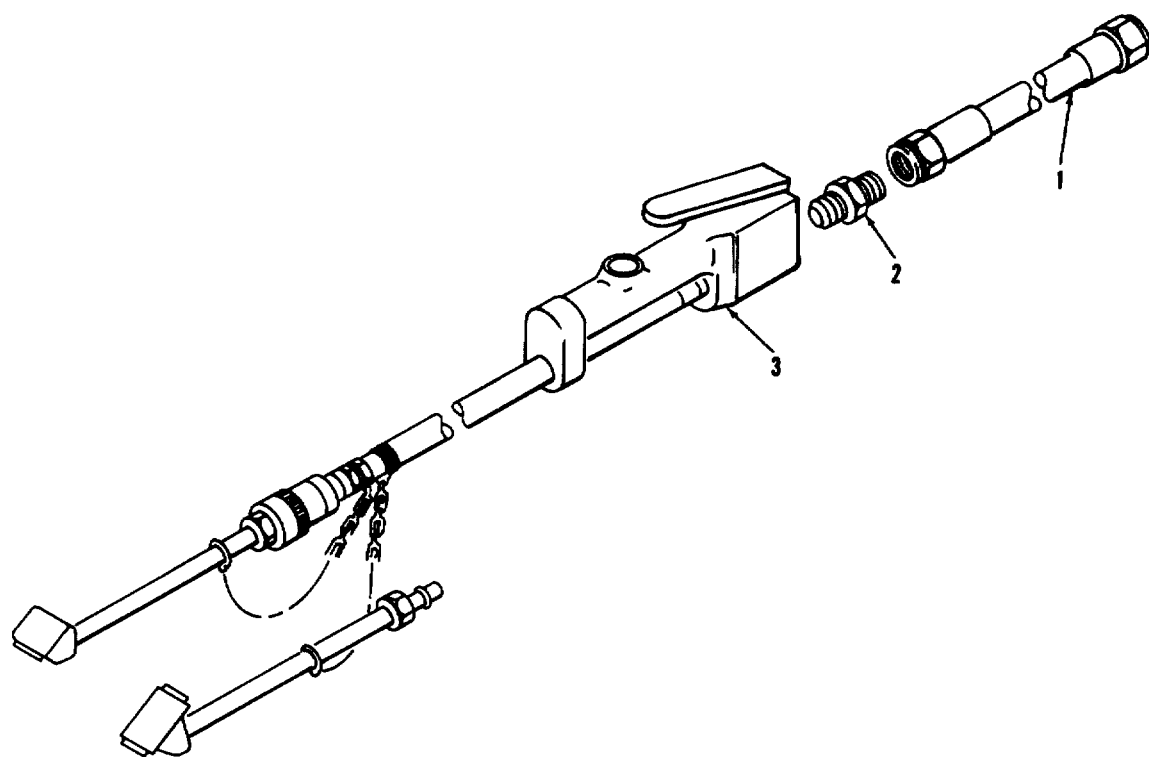


Figure 13. Delivery Hose Assembly

SECTION II

TM 5 4310-378-24P

(1)	(2)	(3)	(4)	(5)	(6)
ITEM NO	SMR CODE	CAGEC	PART NUMBER	DESCRIPTION AND USABLE ON CODES(UOC)	QTY
				GROUP 05. AIR DISCHARGE SYSTEM	
				FIGURE 13. DELIVERY HOSE ASSEMBLY	
1	PAOZZ	16004	85403	HOSE ASSEMBLY, NONME .....	1
2	PAOZZ	30780	1/4X1/4FF-S	NIPPLE, PIPE .....	1
3	PAOZZ	94894	1506	INFLATOR-GAGE, PNEUM.....	1
				END OF FIGURE	

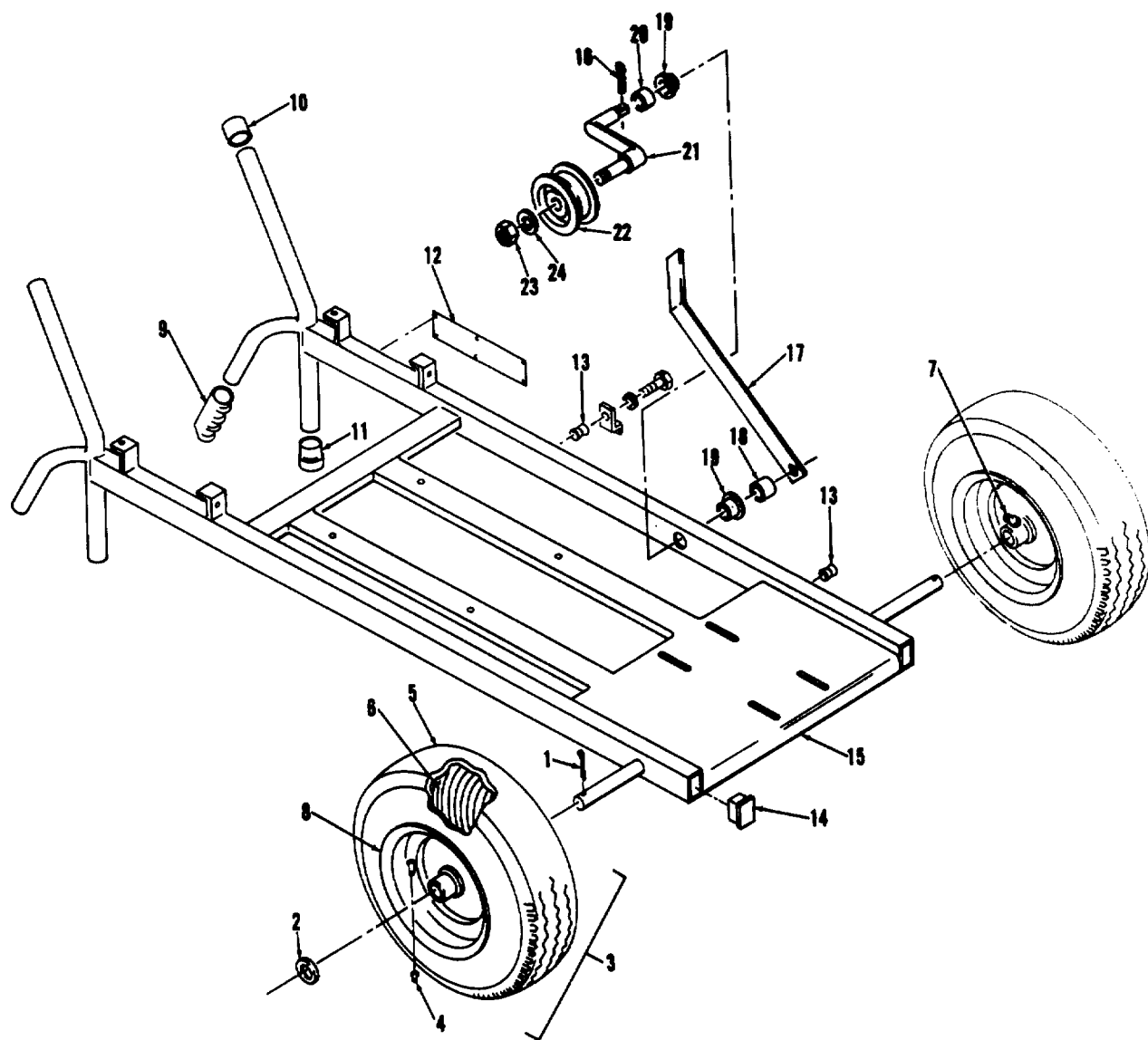


Figure 14. Wheels and Frame Assemblies

(1)	(2)	(3)	(4)	(5)	(6)
ITEM NO	SMR CODE	CAGEC	PART NUMBER	DESCRIPTION AND USABLE ON CODES(UOC)	QTY
GROUP 06. HANDTRUCK ASSEMBLY					
FIGURE 14. WHEELS AND FRAME ASSEMBLIES					
1	XDOZZ	96906	MS24665-457	PIN, COTTER.....	2
2	PAOZZ	88044	AN960C1216	WASHER, FLAT.....	2
3	PBOZZ	58328	ZPC1000006	WHEEL ASSEMBLY .....	2
4	PAOZZ	81348	ZZ-V-25/TYPEIV/C	.CAP, PNEUMATIC VALVE.....	1
				LASS1 /TR-VC-2	
5	XDOZZ	73842	4.10-3.50-6	.TIRE.....	1
6	PAOZZ	81348	ZZ-1-550/G5/4.10	INNER TUBE, PNEUMATI.....	1
			/3.50-6/TR87/OFF		
7	XDOZZ	96906	MS15720-1	FITTING, LUBRICATION.....	2
8	PAOZZ	94189	40159	.WHEEL AND HUB.....	1
9	PAOZZ	15819	7/8EC0-89	GRIP, HANDLE .....	2
10	PAOZZ	15819	706-89	CAP, END LEG .....	2
11	PAOZZ	11544	11-91	CUSHION, LEG.....	2
12	XCOZZ	58328	ZPC1000034	PLATE, ID .....	1
13	PAOZZ	65461	021-5-8100	INSERT, SCREW THREAD . .....	2
14	PAOZZ	11897	132-BB-1 399	CAP, MAINFRAME FRONT.....	2
15	XDOZZ	58328	ZPC1000001	FRAME ASSEMBLY.....	1
16	PAOZZ	58328	MS24665-353	PIN, COTTER.....	1
17	XDOZZ	58328	ZPC100145	LEVER, MANUAL CONTRO.....	1
18	PAOZZ	58328	ZPC1000147-03	SPACER, SLEEVE.....	1
19	PAOZZ	58328	ZPC1000149	BUSHING, SLEEVE .....	2
20	PAOZZ	58328	ZPC1000147-01	SPACER, SLEEVE .....	1
21	PAOZZ	58328	ZPC1000213	LEVER, MANUAL CONTRO.....	1
22	PAOZZ	59254	011-4410	BEARING UNIT, BALL .....	1
23	PAOZZ	96906	MS16228-8C	NUT, SELF-LOCKING .....	1
24	PAOZZ	96906	MS15795-818	WASHER, FLAT.....	1

END OF FIGURE

**Section III. SPECIAL TOOLS LIST**

**(Not Applicable)**

**CROSS-REFERENCE INDEXES**  
**NATIONAL STOCK NUMBER INDEX**

STOCK NUMBER	FIG.	ITEM	STOCK NUMBER	FIG.	ITEM
4730-00-011-4627	2	11	4730-01-130-8523	2	18
	2	14	4730-01-147-1703	2	20
	2	17	5306-01-174-8741	4	1
2610-00-051-9114	14	6		5	1
5305-00-059-3657	6	14		5	8
	6	23	4720-01-179-5414	13	1
2640-00-060-3550	14	4	4310-01-184-7536	4	5
5305-00-068-0508	1	10	4310-01-184-7537	4	6
5310-00-167-0809	14	2	4310-01-184-7538	4	12
4730-00-196-1973	2	21	4310-01-195-7877	4	13
4910-00-204-2644	13	3	4310-01-204-5242	4	15
5305-00-207-8253	6	7	4310-01-204-5260	3	23
5930-00-224-5668	6	33	4310-01-204-5261	3	11
4730-00-240-1741	12	3		3	15
5310-00-241-6638	2	24	4310-01-204-5262	3	13
	6	1	4310-01-204-5301	4	9
5310-00-241-6667	14	23	4310-01-204-7890	2	32
5310-00-245-8825	1	3	4730-01-204-7945	2	44
	2	1	4310-01-204-8406	4	8
	12	14	4310-01-204-8434	3	21
4730-00-278-3828	12	5		3	25
4730-00-278-4357	12	8	4730-01-204-8479	2	28
4730-00-278-8763	2	10	4730-01-204-8481	2	33
	2	13	4310-01-205-9492	4	16
	2	16	4730-01-206-3546	2	45
4730-00-278-8767	12	2	5306-01-207-7529	4	19
4730-00-287-1766	2	19	5306-01-207-9308	3	5
5310-00-543-5933	6	13	5330-01-207-9375	5	7
3110-00-554-5403	5	6	5330-01-207-9422	5	11
4730-00-575-0405	12	12	5330-01-207-9423	5	4
5310-00-582-5677	1	2	5310-01-208-0289	2	30
	2	2	5330-01-208-1979	3	9
	6	8	5330-01-208-1980	4	4
	12	15		4	11
4730-00-595-2628	12	4	5310-01-208-2898	2	29
5310-00-625-5756	2	25	5305-01-208-5210	4	17
	6	2	5360-01-208-5660	3	14
5306-00-637-9674	2	26	5310-01-208-6733	2	39
5315-00-682-1811	1	13	5365-01-208-6926	3	12
5305-00-702-4523	1	1	5365-01-208-6927	4	7
	2	3		4	14
	12	16	5330-01-209-7301	3	17
6685-00-718-6887	12	9	5360-01-209-7612	3	20
5305-00-719-3997	1	4	5360-01-209-7613	3	10
	6	5	5365-01-209-9711	3	22
5306-00-727-4578	6	3	5315-01-210-6547	2	41
5310-00-767-9425	14	24	5360-01-210-6554	3	24
2920-00-865-6665	6	50	5330-01-210-6557	3	19
4730-00-916-3368	14	7	5330-01-210-6559	3	7
5310-00-933-8121	1	5	2910-01-222-6130	6	19
	6	6			

**CROSS-REFERENCE INDEXES**  
**NATIONAL STOCK NUMBER INDEX**

STOCK NUMBER	FIG.	ITEM	STOCK NUMBER	FIG.	ITEM
2805-01-222-6131	6		2805-01-222-6253	6	45
2990-01-222-6133	6	36	2805-01-222-6258	6	42
2990-01-222-6134	6	40	4820-01-225-6546	12	13
5305-01-222-6135	6	47	3920-01-225-6547	14	3
2940-01-222-6136	7	3	3920-01-225-6548	14	8
2910-01-222-6137	8	1	3920-01-225-6549	14	10
2910-01-222-6138	8	7	3920-01-225-6550	14	11
2910-01-222-6139	8	11	3920-01-225-6551	14	14
2990-01-222-6140	9	16	3020-01-225-6583	1	12
2910-01-222-6141	10	1	4730-01-225-6584	2	46
2805-01-222-6142	10	5	4310-01-225-6685	2	27
5330-01-222-6143	11	2	5340-01-225-6692	12	17
5305-01-222-6144	11	3	4820-01-225-6695	12	10
5330-01-222-6145	11	5	4820-01-225-6696	2	23
3110-01-222-6146	11	6	5340-01-225-6703	14	13
2910-01-222-6193	7	8	5340-01-225-6706	14	9
5310-01-222-6194	6	37	5305-01-225-6716	2	5
5310-01-222-6195	6	43		2	7
5315-01-222-6197	6	46	4730-01-225-6718	6	12
2805-01-222-6198	6	29	2910-01-225-6730	6	15
5365-01-222-6202	10	11	2910-01-225-6731	6	9
5360-01-222-6203	7	26	4710-01-225-6732	12	1
5360-01-222-6205	8	8	4310-01-225-6739	2	4
5360-01-222-6206	8	10	2805-01-225-6740	6	11
5360-01-222-6207	9	15	4310-01-225-6782	3	6
5330-01-222-6209	10	12	4310-01-225-6783	3	16
5310-01-222-6213	7	1	5360-01-226-7500	3	2
5305-01-222-6216	6	27	5330-01-226-7501	3	4
5305-01-222-6217	6	30	2805-01-226-7502	5	10
	10	6	2910-01-226-7503	6	16
5305-01-222-6218	6	35	5340-01-226-7504	6	17
	6	41	5310-01-226-7638	4	2
	9	1		5	2
5305-01-222-6219	10	13		5	9
2940-01-222-6221	7	2	5305-01-226-7664	2	38
2990-01-222-6222	6	38	4310-01-226-7673	3	1
2990-01-222-6223	9	11	4310-01-226-7675	3	3
5310-01-222-6226	6	44	4310-01-226-7701	4	20
2805-01-222-6229	10	17	2910-01-228-1629	7	
2805-01-222-6230	10	18	5330-01-228-1630	7	
5306-01-222-6231	10	3	5365-01-229-6066	1	11
5306-01-222-6232	10	4	2990-01-229-6247	9	2
2990-01-222-6233	9	14	2990-01-230-0674	9	4
4730-01-222-6236	6	18	4820-01-230-0692	12	6
5330-01-222-6241	11		5360-01-245-1324	10	19
6680-01-222-6243	11	1	3120-01-305-2528	14	19
5340-01-222-6245	10	16	5365-01-305-9435	14	18
2805-01-222-6249	10	20	5365-01-305-9436	14	20
5325-01-222-6251	6	48	3040-01-305-9926	14	21
2940-01-222-6252	7	4			



**CROSS-REFERENCE INDEXES**  
**PART NUMBER INDEX**

FSCM	PART NUMBER	STOCK NUMBER	FIG.	ITEM
88044	AN960C1216	5310-00-167-0809	14	2
65514	AS213-2-2M-70	4820-01-225-6696	2	23
80204	B18231 A0802N	5306-01-174-8741	4	1
			5	1
			5	8
23224	CAP70500SL	2805-01-225-6740	6	11
55921	C70103-57610		2	35
55921	C70111-11020	5330-01-209-7301	3	17
55921	C70111-11450		3	18
55921	C70111-11460	5330-01-210-6557	3	19
55921	C70111-31020	4310-01-204-5260	3	23
55921	C70111-31030	4310-01-204-8434	3	21
			3	25
55921	C70111-57700		2	36
55921	C70111-57730		2	37
55921	C70111-61030	4310-01-184-7538	4	12
55921	C70111-61050	4310-01-195-7877	4	13
55921	C70111-66000	4730-01-204-8479	2	28
55921	C70111-66010		2	34
55921	C70111-66110	4730-01-204-8481	2	33
55921	C70111-66170		2	31
55921	C70112-11010	4310-01-225-6782	3	6
55921	C70112-11020	5330-01-210-6559	3	7
55921	C70112-11210	4310-01-226-7673	3	1
55921	C70112-11220	4310-01-226-7675	3	3
55921	C70112-11230	5360-01-226-7500	3	2
55921	C70112-11450		3	8
55921	C70112-11460	5330-01-208-1979	3	9
55921	C70112-31020	4310-01-204-5262	3	13
55921	C70112-31030	4310-01-204-5261	3	11
			3	15
55921	C70112-31070	5360-01-208-5660	3	14
55921	C70112-41070	5360-01-209-7613	3	10
55921	C70112-51010		4	3
55921	C70112-51030	5330-01-208-1980	4	4
			4	11
55921	C70112-56060	5315-01-210-6547	2	41
55921	C70112-61010	4310-01-204-5301	4	9
55921	C70112-61030	4310-01-184-7536	4	5
55921	C70112-61050	4310-01-184-7537	4	6
55921	C70112-61070	5365-010208-6927	4	7
			4	14
55921	C70112-61120	4310-01-204-8406	4	8
55921	C70112-61200	4310-01-226-7701	4	20
55921	C70112-61250	5306-01-207-7529	4	19
55921	C70112-76210	5310-01-208-6733	4	39
55921	C70122-57030		5	3
55921	C70122-57040	5330-01-207-9423	5	4
55921	C70122-57060	2805-01-226-7502	5	10
55921	C70122-57070	5330-01-207-9422	5	11
55921	C70122-57080	5330-01-207-9375	5	7

**CROSS-REFERENCE INDEXES  
PART NUMBER INDEX**

<b>FSCM</b>	<b>PART NUMBER</b>	<b>STOCK NUMBER</b>	<b>FIG.</b>	<b>ITEM</b>
55921	C70122-61280		4	18
55921	C70122-87010	4730-01-206-3546	2	45
55921	C70132-56010		5	5
55921	C70132-57010A		5	12
55921	C70132-76010		2	40
55921	C70132-87030	4730-01-204-7945	2	44
55921	C70132-87030A	4730-01-225-6584	2	46
55921	C70132-87100		2	42
55921	C70172-12010	4310-01-225-6783	3	16
55921	C70172-32070	5360-01-210-6554	3	24
55921	C70172-42070	5360-01-209-1612	3	20
55921	C70172-52010		4	10
55921	C70172-62010	4310-01-205-9492	4	16
55921	C70172-62120	4310-01-204-5242	4	15
55921	C70172-87300		2	43
55921	C91501-1308005	5305-01-226-7664	2	38
55921	C91505-1308005	5306-01-207-9308	3	5
55921	C91505-2304010	5305-01-208-5210	4	17
55921	C92521-150400	5310-01-208-0289	2	30
55921	C92521-190800	5310-01-226-7638	4	2
			5	2
			5	9
55921	C93601-87002	5330-01-226-7501	3	4
55921	C93610-130025	5365-01-209-9711	3	22
55921	C93610-130032	5365-01-208-6926	3	12
76241	DH2400	3020-01-225-0583	1	12
55921	E-23A	4310-01-225-0685	2	27
66289	EY0011706250	5305-01-222-6135	6	47
66289	EY0021814000	5310-01-222-6195	6	43
66289	EY0021908000	5310-01-222-6194	6	37
66289	EY0022706000		8	17
66289	EY0023806000	5310-01-222-6213	7	1
66289	EY0031306000		8	4
66289	EY0032006000		8	3
66289	EY0032014000	5310-01-222-6226	6	44
66289	EY0043106300		8	16
66289	EY0105060120	5306-01-222-6231	10	3
66289	EY0105080250	5306-01-222-6232	10	4
66289	EY0110060010	5305-01-222-6218	6	35
			6	41
			9	1
66289	EY0110060020	5305-01-222-6217	6	30
			10	6
66289	EY0110060030	5305-01-222-6216	6	27
			8	12
66289	EY0110080010	5305-01-222-6219	10	13
66289	EY0130060040	5305-01-222-6144	11	3
66289	EY0186060010		8	2
66289	EY0211140020	5330-01-222-6209	10	12
66289	EY0213160010	5330-01-222-6143	11	2
66289	EY0230060010		11	10

**CROSS-REFERENCE INDEXES**  
**PART NUMBER INDEX**

FSCM	PART NUMBER	STOCK NUMBER	FIG.	ITEM
66289	EY0230250110		11	27
66289	EY0307300070		11	12
66289	EY0323030010	5315-01-222-6197	6	46
66289	EY0440250020	5330-01-222-6145	11	5
66289	EY0440250070		11	29
66289	EY0565140010		11	20
66289	EY0600250010	3110-01-222-6146	11	6
66289	EY0642004210		6	20
66289	EY0642004220		6	22
66289	EY0642004230		6	21
66289	EY0642004260	4730-01-222-6236	6	18
66289	EY0642006400	2910-01-222-6130	6	19
66289	EY0643000118	5340-01-226-7504	6	17
66289	EY0851080210	2805-01-222-6142	10	5
66289	EY1065011608	5360-01-222-6207	9	15
66289	EY1065012818		9	10
66289	EY1065013208		9	9
66289	EY1065013618		9	8
66289	EY1065014408		9	7
66289	EY1065018508		9	6
66289	EY1065018608		9	5
66289	EY1066239308		7	25
66289	EY1506235608		7	27
66289	EY2054190103		11	9
66289	EY2054600703		11	7
66289	EY2096235308		7	22
66289	EY2096242008		7	30
66289	EY2096244508	5360-01-222-6203	7	26
66289	EY2096244608		7	23
66289	EY2142330103		11	21
66289	EY2143520111		6	39
66289	EY2146245008		7	10
66289	EY2146245108		7	9
66289	EY2146251508		7	13
66289	EY2146254008		7	12
66289	EY2146255108		7	11
66289	EY2204160103		11	13
66289	EY2206253508		7	28
66289	EY2262360103		11	23
66289	EY2262371107		11	24
66289	EY2262391103		11	25
66289	EY2265010008		9	12
66289	EY2265010107	2990-01-230-0674	9	4
66289	EY2266230217	5330-01-228-1630	7	
66289	EY2266230407	2805-01-222-6131	6	
66289	EY2266230507		7	18
66289	EY2266235108		7	16
66289	EY2266250008		7	24
66289	EY2266250508		7	14
66289	EY2266252508		7	17
66289	EY2266253008		7	29

**CROSS-REFERENCE INDEXES**  
**PART NUMBER INDEX**

FSCM	PART NUMBER	STOCK NUMBER	FIG.	ITEM
66289	EY2266255008		7	19
66289	EY2266255108		7	20
66289	EY2267024508	5325-01-222-6251	6	48
66289	EY227013028		6	49
66289	EY227101010		11	30
66289	EY2271100201		11	4
66289	EY2271300103		10	14
66289	EY2271420203	280501-222-6249	10	20
66289	EY2271430101		10	7
66289	EY2271440101		10	9
66289	EY2271500101		10	15
66289	EY2271600103		11	8
66289	EY2271600603		10	8
66289	EY2271600703		10	10
66289	EY2272090201		11	28
66289	EY2272250100		11	16
66289	EY2272300103		11	17
66289	EY2272310103		11	19
66289	EY2272320103		11	18
66289	EY2272340103		11	26
66289	EY2272340107		11	22
66289	EY2273010101	2990-01-222-6222	6	38
66289	EY2273170103		11	14
66289	EY2273260100	2940-01-222-6221	7	2
66289	EY2273290103	2910-01-222-6141	10	1
66289	EY2273330103		11	15
66289	EY2273340103	2805-01-222-6229	10	17
66289	EY2273350103	2805-01-222-6230	10	18
66289	EY2273360103	5360-01-245-1324	10	19
66289	EY2273370103	5340-01-222-6245	10	16
66289	EY2273420101	2990-01-222-6133	6	36
66289	EY2273500101		7	6
66289	EY2273510101	2940-01-222-6136	7	3
66289	EY2273590103		10	2
66289	EY2273590203		7	31
66289	EY2273600103		7	5
66289	EY2273600203	2940-01-222-6252	7	4
66289	EY2273600313		7	7
66289	EY2274220103		8	5
66289	EY2274230101		8	6
66289	EY2274230107	2910-01-222-6137	8	1
66289	EY2274250107	2910-01-222-6138	8	7
66289	EY2274250111	5360-01-222-6206	8	10
66289	EY2274270101		8	9
66289	EY2274280101	5360-01-222-6205	8	8
66289	EY2274330101		8	18
66289	EY2274330107	2910-01-222-6139	8	11
66289	EY2274350101		8	13
66289	EY2274360103		8	15
66289	EY2274500203		8	14
66289	EY2274500301		11	11
66289	EY2275010508	2990-01-222-6223	9	11

**CROSS-REFERENCE INDEXES**  
**PART NUMBER INDEX**

FSCM	PART NUMBER	STOCK NUMBER	FIG.	ITEM
66289	EY2275011008		9	13
66289	EY2275012008	2990-01-222-6233	9	14
66289	EY2275014508	2990-01-222-6140	9	16
66289	EY2275021100	2990-01-229-6247	9	2
66289	EY2275153601		9	3
66289	EY2275260103	2805-01-222-6258	6	42
66289	EY2275270103	2990-01-222-6134	6	40
66289	EY2276230107	2910-01-228-1629	7	
66289	EY2276230200	2910-01-222-6193	7	8
66289	EY2276240008		7	15
66289	EY2276255008		7	21
66289	EY2276264001	2910-01-226-7503	6	16
66289	EY2276360007	5365-01-222-6202	10	11
66289	EY2276360107	6680-01-222-6243	11	1
66289	EY2277012108	2805-01-222-6253	6	45
66289	EY2279900207	5330-01-222-6241	11	
76241	HQX3/4	5365-01-229-6066	1	11
96906	MS15795-810	5310-00-582-5677	1	2
			2	2
			6	8
			12	15
96906	MS15795-812	5310-00-625-5756	2	25
			6	2
96906	M515795-818	5310-00-767-9425	14	24
96906	MS16228-4C	5310-00-245-8825	1	3
			2	1
			12	14
96906	MS16228-5C	5310-00-241-6638	2	24
			6	1
96906	MS16228-8C	5310-00-241-6667	14	23
96906	MS20066-191	5315-00-682-1811	1	13
58328	MS24665-353		16	16
96906	MS24665-457		14	1
96906	MS35307-303	5305-00-719-3997	1	4
			6	5
96906	MS35307-306	5305-00-702-4523	1	1
			2	3
			12	16
96906	MS35307-308	5305-00-207-8253	6	7
96906	MS35307-336	5306-00-637-9674	2	26
96906	MS35307-339	5306-00-727-4578	6	3
96906	MS35333-73	5310-00-543-5933	6	13
96906	MS35338-139	5310-00-933-8121	1	5
			6	6
96906	MS35909-4	2920-00-865-6665	6	50
96906	MS39171-13	4730-00-287-1766	2	19
96906	MS39171-17	4730-00-278-3828	12	5
96906	MS39176-3	4730-00-011-4627	2	11
			2	14
			2	17
96906	MS39176-7	4730-00-240-1741	12	3

## CROSS-REFERENCE INDEXES

## PART NUMBER INDEX

FSCM	PART NUMBER	STOCK NUMBER	FIG.	ITEM
96906	MS39177-3	4730-00-278-8763	2	10
			2	13
			2	16
96906	MS39177-7	4730-00-278-8767	12	2
96906	MS51846-28	4730-00-196-1973	2	21
96906	MS51958-61	5305-00-059-3657	6	14
			6	23
96906	MS90728-6	5305-00-068-0508	1	10
61349	P500 1/4LM2IN-30 OPSI	6685-00-718-6887	12	9
71647	RCB-HU-165-185	4824-01-230-0692	12	6
66289	SKM10-0010		6	31
66289	SKM10-0011		6	34
66289	YC9FS1	5930-00-224-5668	6	33
58328	ZPC1000001		14	15
58328	ZPC1000002		6	4
58328	ZPC1000006	3920-01-225-6547	14	3
58328	ZPC1000007		12	18
58328	ZPC1000010	5340-01-225-6692	12	17
58328	ZPC1000024	4710-01-225-6732	12	1
58328	ZPC1000026	2910-01-225-6731	6	9
58328	ZPC1000027		1	7
58328	ZPC1000028		1	9
58328	ZPC1000029		6	28
58328	ZPC1000031		12	19
58328	ZPC1000032		6	26
58328	ZPC1000033		6	10
58328	ZPC1000034		14	12
58328	ZPC1000037		2	8
58328	ZPC1000038		6	25
58328	ZPC1000041	2910-01-225-6730	6	15
58328	ZPC1000048		6	24
58328	ZPC1000049		2	6
58328	ZPC1000051	4310-01-225-6739	2	4
58328	ZPC1000053		2	9
58328	ZPC1000054		2	12
58328	ZPC1000055		2	15
58328	ZPC1000059	5305-01-225-6716	2	5
			2	7
58328	ZPC1000063		6	32
58328	ZPC1000147-01	5365-01-305-9436	14	20
58328	ZPC1000147-03	5365-01-305-9435	14	18
58328	ZPC1000149	3120-01-305-2528	14	19
58328	ZPC1000213	3040-01-305-9926	14	21
58328	ZPC1000234		1	6
58328	ZPC100145		14	17
81348	ZZ-B-190/2P66B2R		1	8
81348	ZZ-I-550/G5/4.10 /3 50-6/TR87/OFF	2610-00-051-9114	14	6
81348	2Z-V-25/TYPEIV/C LASS1/TR-VC-2	2640-00-060-3550	14	4

## CROSS-REFERENCE INDEXES

## PART NUMBER INDEX

FSCM	PART NUMBER	STOCK NUMBER	FIG.	ITEM
59254	011-4410		14	22
65461	021-5-8100	5340-01-225-6703	14	13
92392	0910197	4730-00-278-4357	12	8
30780	1/4KMOO-S	4730-00-575-0405	12	12
30780	1/4X1/4CR-B		12	7
30780	1/4X1/4FF-S		12	11
			13	2
11544	11-91	3920-01-225-6550	14	11
21760	1205	3110-00-554-5403	5	6
11897	132-BB-1399	3920-01-225-6551	14	14
94894	1506	4910-00-204-2644	13	3
93061	172C-4-2	4730-01-130-8523	2	18
93061	213P-4	4730-01-147-1703	2	20
25229	2305X2	4820-01-225-6646	12	13
95789	3038-B		14	7
66036	39940	4730-01-225-6718	6	12
73842	4.10-3.50-6		14	5
81343	4-4 30239B		2	22
94189	40159	3920-01-225-6548	14	8
93061	68C-8-8	4730-00-595-2628	12	4
15819	7/8EC0-89	5340-01-225-6706	14	9
55921	70111-66141	4310-01-204-7890	2	32
15819	706-89	3920-01-225-6549	14	10
66289	800392	2805-01-222-6198	6	29
16004	85403	4720-01-179-5414	13	1
39428	90924A124	5310-01-208-2898	2	29
17875	95202-200-ASME	4820-01-225-6695	12	10

## CROSS-REFERENCE INDEXES

## PART NUMBER INDEX

FSCM	PART NUMBER	STOCK NUMBER	FIG.	ITEM
88044	AN960C1216	5310-00-167-0809	14	2
65514	AS213-2-2M-70	4820-01-225-6696	2	23
80204	B18231A0802N	5306-01-174-8741	4	1
			5	1
			5	8
23224	CAP70500SL	2805-01-225-6740	6	11
55921	C70103-57610		2	35
55921	C70111-11020	5330-01-209-7301	3	17
55921	C70111-11450		3	18
55921	C70111-11460	5330-01-210-6557	3	19
55921	C70111-31020	4310-01-204-5260	3	23
55921	C70111-31030	4310-01-204-8434	3	21
			3	25
55921	C70111-57700		2	36
55921	C70111-57730		2	37
55921	C70111-61030	4310-01-184-7538	4	12
55921	C70111-61050	4310-01-195-7877	4	13
55921	C70111-66000	4730-01-204-8479	2	28
55921	C70111-66010		2	34
55921	C70111-66110	4730-01-204-8481	2	33
55921	C70111-66170		2	31
55921	C70112-11010	4310-01-225-6782	3	6
55921	C70112-11020	5330-01-210 6559	3	7
55921	C70112-11210	4310-01-226-7673	3	1
55921	C70112-11220	4310-01-226-7675	3	3
55921	C70112-11230	5360-01-226-7500	3	2
55921	C70112-11450		3	8
55921	C70112-11460	5330-01-208-1979	3	9
55921	C70112-31020	4310-01-204-5262	3	13
55921	C70112-31030	4310-01-204-5261	3	11
			3	15
55921	C70112-31070	5360-01-208-5660	3	14
55921	C70112-41070	5360-01-209-7613	3	10
55921	C70112-51010		4	3
55921	C70112-51030	5330-01-208-1980	4	4
			4	11
55921	C70112-56060	5315-01-210-6547	2	41
55921	C70112-61010	4310-01-204-5301	4	9
55921	C70112-61030	4310-01-184-7536	4	5
55921	C70112-61050	4310-01-184-7537	4	6
55921	C70112-61070	5365-01-208-6927	4	7
			4	14
55921	C70112-61120	4310-01-204-8406	4	8
55921	C70112-61200	4310-01-226-7701	4	20
55921	C70112-61250	5306-01-207-7529	4	19
55921	C70112-76210	5310-01-208-6733	4	39
55921	C70122-57030		5	3
55921	C70122-57040	5330-01-207-9423	5	4
55921	C70122-57060	2805-01-226-7502	5	10
55921	C70122-57070	5330-01-207-9422	5	11
55921	C70122-57080	5330-01-207-9375	5	7



**CROSS-REFERENCE INDEXES**  
**FIGURE AND ITEM NUMBER INDEX**

FIG.	ITEM	STOCK NUMBER	CAGEC	PART NUMBER
2	39	5310-01-208-6733	55921	C70112-76210
2	40		55921	C70132-76010
2	41	5315-01-210-6547	55921	C70112-56060
2	42		55921	C70132-87100
2	43		55921	C70172-87300
2	44	4730-01-204-7945	55921	C70132-87030
2	45	4730-01-206-3546	55921	C70122-87010
2	46	4730-01-225-6584	55921	C70132-87030A
3	1	4310-01-226-7673	55921	C70112-11210
3	2	5360-01-226-7500	55921	C70112-11230
3	3	4310-01-226-7675	55921	C70112-11220
3	4	5330-01-226-7501	55921	C93601-87002
3	5	5306-01-207-9308	55921	C91505-1308025
3	6	4310-01-225-6782	55921	C70112-11010
3	7	5330-01-210-6559	55921	C70112-11020
3	8		55921	C70112-11450
3	9	5330-01-208-1979	55921	C70112-11460
3	10	5360-01-209-7613	55921	C70112-41070
3	11	4310-01-204-5261	55921	C70112-31030
3	12	5365-01-208-6926	55921	C93610-130032
3	13	4310-01-204-5262	55921	C70112-31020
3	14	5360-01-208-5660	55921	C70112-31070
3	15	4310-01-204-5261	55921	C70112-31030
3	16	4310-01-225-6783	55921	C70172-12010
3	17	5330-01-209-7301	55921	C70111-11020
3	18		55921	C70111-11450
3	19	5330-01-210-6557	55921	C70111-11460
3	20	5360-01-209-7612	55921	C70172-42070
3	21	4310-01-204-8434	55921	C70111-31030
3	22	5365-01-209-9711	55921	C93610-130025
3	23	4310-01-204-5260	55921	C70111-31020
3	24	5360-01-210-6554	55921	C70172-32070
3	25	4310-01-204-8434	55921	C70111-31030
4	1	5306-01-174-8741	80204	B18231A08020N
4	2	5310-01-226-7638	55921	C92521-190800
4	3		55921	C70112-51010
4	4	5330-01-208-1980	55921	C70112-51030
4	5	4310-01-184-7536	55921	C70112-61030
4	6	4310-01-184-7537	55921	C70112-61050
4	7	5365-01-208-6927	55921	C70112-61070
4	8	4310-01-204-8406	55921	C70112-61120
4	9	4310-01-204-5301	55921	C70112-61010
4	10		55921	C70172-52010
4	11	5330-01-208-1980	55921	C70112-51030
4	12	4310-01-184-7538	55921	C70111-61030
4	13	4310-01-195-7877	55921	C70111-61050
4	14	5365-01-208-6927	55921	C70112-61070
4	15	4310-01-204-5242	55921	C70172-62120
4	16	4310-01-205-9492	55921	C70172-62010
4	17	5305-01-208-5210	55921	C91505-2304010
4	18		55921	C70122-61280

**CROSS-REFERENCE INDEXES**  
**FIGURE AND ITEM NUMBER INDEX**

FIG.	ITEM	STOCK NUMBER	CAGEC	PART NUMBER
4	19	5306-01-207-7529	55921	C70112-61250
4	20	4310-01-226-7701	55921	C70112-61200
5	1	5306-01-174-8741	80204	B18231A08020N
5	2	5310-01-226-7638	55921	C92521-190800
5	3		55921	C70122-57030
5	4	5330-01-207-9423	55921	C70122-57040
5	5		55921	C70132-56010
5	6	3110-00-554-5403	21760	1205
5	7	5330-01-207-9375	55921	C70122-57080
5	8	5306-01-174-8741	80204	B18231A08020N
5	9	5310-01-226-7638	55921	C92521-190800
5	10	2805-01-226-7502	55921	C70122-57060
5	11	5330-01-207-9422	55921	C70122-57070
5	12		55921	C70132-57010A
6		2805-01-222-6131	66289	EY2266230407
6	1	5310-00-241-6638	96906	MS16228-5C
6	2	5310-00-625-5756	96906	MS15795-812
6	3	5306-00-727-4578	96906	MS35307-339
6	4		58328	ZPC1000002
6	5	5305-00-719-3997	96906	MS35307-303
6	6	5310-00-933-8121	96906	MS35338-139
6	7	5305-00-207-8253	96906	MS35307-308
6	8	5310-00-582-5677	96906	MS15795-810
6	9	2910-01-225-6731	58328	ZPC1000026
6	10		58328	ZPC1000033
6	11	2805-01-225-6740	23224	CAP70500SL
6	12	4730-01-225-6718	66036	39940
6	13	5310-00-543-5933	96906	MS35333-73
6	14	5305-00-059-3657	96906	MS51958-61
6	15	2910-01-225-6730	58328	ZPC1000041
6	16	2910-01-226-7503	66289	EY2276264001
6	17	5340-01-226-7504	66289	EY0643000118
6	18	4730-01-222-6236	66289	EY0642004260
6	19	2910-01-222-6130	66289	EY0642006400
6	20		66289	EY0642004210
6	21		66289	EY0642004230
6	22		66289	EY0642004220
6	23	5305-00-059-3657	96906	MS51958-61
6	24		58328	ZPC1000048
6	25		58328	ZPC1000038
6	26		58328	ZPC1000032
6	27	5305-01-222-6216	66289	EY0110060030
6	28		58328	ZPC1000029
6	29	2805-01-222-6198	66289	800392
6	30	5305-01-222-6217	66289	EY0110060020
6	31		66289	SKM10-0010
6	32		58328	ZPC1000063
6	33	5930-00-224-5668	66289	YC9FS1
6	34		66289	SKM10-0011
6	35	5305-01-222-6218	66289	EY0110060010
6	36	2990-01-222-6133	66289	EY2273420101

**CROSS-REFERENCE INDEXES**  
**FIGURE AND ITEM NUMBER INDEX**

FIG.	ITEM	STOCK NUMBER	CAGEC	PART NUMBER
6	37	5310-01-222-6194	66289	EY0021908000
6	38	2990-01-222-6222	66289	EY2273010101
6	39		66289	EY2143520111
6	40	2990-01-222-6134	66289	EY2275270103
6	41	5305-01-222-6218	66289	EY0110060010
6	42	2805-01-222-6258	66289	EY2275260103
6	43	5310-01-222-6195	66289	EY0021814000
6	44	5310-01-222-6226	66289	EY0032014000
6	45	2805-01-222-6253	66289	EY2277012108
6	46	5315-01-222-6197	66289	EY0323030010
6	47	5305-01-222-6135	66289	EY0011706250
6	48	5325-01-222-6251	66289	EY2267024508
6	49		66289	EY227013028
6	50	2920-00-865-6665	96906	MS35909-4
7		2910-01-228-1629	66289	EY2276230107
7		5330-01-228-1630	66289	EY2266230217
7	1	5310-01-222-6213	66289	EY002380600
7	2	2940-01-222-6221	66289	EY2273260100
7	3	2940-01-222-6136	66289	EY2273510101
7	4	2940-01-222-6252	66289	EY2273600203
7	5		66289	EY2273600103
7	6		66289	EY2273500101
7	7		66289	EY2273600313
7	8	2910-01-222-6193	66289	EY2276230200
7	9		66289	EY2146245108
7	10		66289	EY2146245008
7	11		66289	EY2146255108
7	12		66289	EY2146254008
7	13		66289	EY2146251508
7	14		66289	EY2266250508
7	15		66289	EY2276240008
7	16		66289	EY2266235108
7	17		66289	EY2266252508
7	18		66289	EY2266230507
7	19		66289	EY2266255008
7	20		66289	EY2266255108
7	21		66289	EY2276255008
7	22		66289	EY2096235308
7	23		66289	EY2096244608
7	24		66289	EY2266250008
7	25		66289	EY1066239308
7	26	5360-01-222-6203	66289	EY2096244508
7	27		66289	EY1506235608
7	28		66289	EY2206253508
7	29		66289	EY2266253008
7	30		66289	EY2096242008
7	31		66289	EY2273590203
8	1	2910-01-222-6137	66289	EY2274230107
8	2		66289	EY0186060010
8	3		66289	EY0032006000
8	4		66289	EY0031306000

**CROSS-REFERENCE INDEXES**  
**FIGURE AND ITEM NUMBER INDEX**

FIG.	ITEM	STOCK NUMBER	CAGEC	PART NUMBER
8	5		66289	EY2274220103
8	6		66289	EY2274230101
8	7	2910-01-222-6138	66289	EY2274250107
8	8	5360-01-222-6205	66289	EY2274280101
8	9		66289	EY2274270101
8	10	5360-01-222-6206	66289	EY2274250111
8	11	2910-01-222-6139	66289	EY2274330107
8	12		66289	EY0110060030
8	13		66289	EY2274350101
8	14		66289	EY2274500203
8	15		66289	EY2274360103
8	16		66289	EY0043106300
8	17		66289	EY0022706000
8	18		66289	EY2274330101
9	1	5305-01-222-6218	66289	EY0110060010
9	2	2990-01-229-6247	66289	EY2275021100
9	3		66289	EY2275153601
9	4	2990-01-230-0674	66289	EY2265010107
9	5		66289	EY1065018608
9	6		66289	EY1065018508
9	7		66289	EY1065014408
9	8		66289	EY1065013618
9	9		66289	EY1065013208
9	10		66289	EY1065012818
9	11	2990-01-222-6223	66289	EY2275010508
9	12		66289	EY2265010008
9	13		66289	EY2275011008
9	14	2990-01-222-6233	66289	EY2275012008
9	15	5360-01-222-6207	66289	EY1065011608
9	16	2990-01-222-6140	66289	EY2275014508
10	1	2910-01-222-6141	66289	EY2273290103
10	2		66289	EY2273590103
10	3	5306-01-222-6231	66289	EY0105060120
10	4	5306-01-222-6232	66289	EY0105080250
10	5	2805-01-222-6142	66289	EY0851080210
10	6	5305-01-222-6217	66289	EY0110060020
10	7		66289	EY2271430101
10	8		66289	EY2271600603
10	9		66289	EY2271440101
10	10		66289	EY2271600703
10	11	5365-01-222-6202	66289	EY2276360007
10	12	5330-01-222-6209	66289	EY0211140020
10	13	5305-01-222-6219	66289	EY0110080010
10	14		66289	EY2271300103
10	15		66289	EY2271500101
10	16	5340-01-222-6245	66289	EY2273370103
10	17	2805-01-222-6229	66289	EY2273340103
10	18	2805-01-222-6230	66289	EY2273350103
10	19	5360-01-245-1324	66289	EY2273360103
10	20	2805-01-222-6249	66289	EY2271420203
11		5330-01-222-6241	66289	EY2279900207

**CROSS-REFERENCE INDEXES**  
**FIGURE AND ITEM NUMBER INDEX**

FIG.	ITEM	STOCK NUMBER	CAGEC	PART NUMBER
11	1	6680-01-222-6243	66289	EY2276360107
11	2	5330-01-222-6143	66289	EY0213160010
11	3	5305-01-222-6144	66289	EY0130060040
11	4		66289	EY2271100201
11	5	5330-01-222-6145	66289	EY0440250020
11	6	3110-01-222-6146	66289	EY0600250010
11	7		66289	EY2054600703
11	8		66289	EY2271600103
11	9		66289	EY2054190103
11	10		66289	EY0230060010
11	11		66289	EY2274500301
11	12		66289	EY0307300070
11	13		66289	EY2204160103
11	14		66289	EY2273170103
11	15		66289	EY2273330103
11	16		66289	EY2272250100
11	17		66289	EY2272300103
11	18		66289	EY2272320103
11	19		66289	EY2272310103
11	20		66289	EY0565140010
11	21		66289	EY2142330103
11	22		66289	EY2272350107
11	23		66289	EY2262360103
11	24		66289	EY2262371107
11	25		66289	EY2262391103
11	26		66289	EY2272340103
11	27		66289	EY0230250110
11	28		66289	EY2272090201
11	29		66289	EY0440250070
11	30		66289	EY227101010
12	1	4710-01-225-6732	58328	ZPC1000024
12	2	4730-00-278-8767	96906	MS39177-7
12	3	4730-00-240-1741	96906	MS39176-7
12	4	4730-00-595-2628	93061	68C-8-8
12	5	4730-00-278-3828	96906	MS39171-17
12	6	4820-01-230-0692	71647	RCB-HU-165-185
12	7		30780	1/4X1/4CR-B
12	8	4730-00-278-4357	92392	0910197
12	9	6685-00-718-6887	61349	P500 1/4LM2IN-30 OPSI
12	10	4820-01-225-6695	17875	95202-200-ASME
12	11		30780	1/4X1/4FF-S
12	12	4730-00-575-0405	30780	1/4KMMOO-S
12	13	4820-01-225-6546	25299	2305X2
12	14	5310-00-245-8825	96906	MS16228-4C
12	15	5310-00-582-5677	96906	MS15795-810
12	16	5305-00-702-4523	96906	MS35307-306
12	17	5340-01-225-6692	58328	ZPC1000010
12	18		58328	ZPC1000007
12	19		58328	ZPC1000031
13	1	4720-01-179-5414	16004	85403

**CROSS-REFERENCE INDEXES**  
**FIGURE AND ITEM NUMBER INDEX**

FIG.	ITEM	STOCK NUMBER	CAGEC	PART NUMBER
13	2		30780	1/4X1/4FF-2
13	3	4910-00-204-2644	94894	1506
14	1		96906	MS24665-457
14	2	5310-00-167-0809	88044	AN960C1216
14	3	3920-01-225-6547	58328	ZPC1 000006
14	4	2640-00-060-3550	81348	ZZ-V-25/TYPEIV/C LASS1/TR-VC-2
14	5		73842	4.10-3.50-6
14	6	2610-00-051-9114	81348	ZZ-1-550/G5/4.10 /3.50-6/TR87/OFF
14	7	4730-00-916-3368	96906	MS15720-1
14	8	3920-01-225-6548	94189	40159
14	9	5340-01-225-6706	15819	7/8EC0-89
14	10	3920-01-225-6549	15819	706-89
14	11	3920-01-225-6550	11544	11-91
14	12		58328	ZPC1000034
14	13	5340-01-225-6703	65461	021-5-8100
14	14	3920-01-225-6551	11897	132-BB-1399
14	15		58328	ZPC100001
14	17		58328	ZPC100145
14	18	5365-01-305-9434	58328	ZPC1000147-03
14	19	3120-01-305-2528	58328	ZPC1000149
14	20	5365-01-305-9436	58328	ZPC1000147-01
14	21	3040-01-305-9926	58328	ZPC1000213
14	22		59254	011-4410
14	23	5310-00-241-6667	96906	MS16228-8C
14	24	5310-00-767-9425	96906	MS15795-818
16	16		58328	MS24665-353

***These are the instructions for sending an electronic 2028***

The following format must be used if submitting an electronic 2028. The subject line must be exactly the same and all fields must be included; however only the following fields are mandatory: 1, 3, 4, 5, 6, 7, 8, 9,10,13,15,16, 17, and 27.

From: "Whomever" <whomever-avma27.army.mil>

To: mpmt%avma28Cft-louis-emh7.army.mil

Subject: DA Form 2028

1. **From:** Joe Smith
2. **Unit:** home
3. **Address:**4300 Park
4. **City:** Hometown
5. **St:** MO
6. **Zip:** 77777
7. **Date Sent:** 19-OCT-93
8. **Pub no:** 55-2840-229-23
9. **Pub Title:** TM
10. **Publication Date:** 04-JUL-85
11. **Change Number:** 7
12. **Submitter Rank:** MSG
13. **Submitter FName:** Joe
14. **Submitter MName:** T
15. **Submitter LName:** Smith
16. **Submitter Phone:** 123-123-1234
17. **Problem:** 1
18. **Page:** 2
19. **Paragraph:** 3
20. **Line:** 4
21. **NSN:** 5
22. **Reference:** 6
23. **Figure:** 7
24. **Table:** 8
25. **Item:** 9
26. **Total:** 123
27. **Text:**

This is the text for the problem below line 27.

By Order of the Secretary of the Army:

CARL E. VUONO  
*General, United States Army*  
*Chief of Staff*

Official:

WILLIAM J. MEEHAN, II  
*Brigadier General, United States Army*  
*The Adjutant General*

DISTRIBUTION:

To be distributed in accordance with DA Form 12-25A, Unit and Direct Support and General Support Maintenance Requirements for Compressor Unit, Reciprocal, Model ZPC 175/5 (TM 5-4310-378 Series).



RECOMMENDED CHANGES TO EQUIPMENT TECHNICAL PUBLICATIONS



*THEN...JOT DOWN THE DOPE ABOUT IT ON THIS FORM. CAREFULLY TEAR IT OUT, FOLD IT AND DROP IT IN THE MAIL.*

**SOMETHING WRONG WITH PUBLICATION**

FROM: (PRINT YOUR UNIT'S COMPLETE ADDRESS)

DATE SENT

PUBLICATION NUMBER

PUBLICATION DATE

PUBLICATION TITLE

BE EXACT PIN-POINT WHERE IT IS

PAGE NO.	PARA-GRAPH	FIGURE NO.	TABLE NO.

IN THIS SPACE, TELL WHAT IS WRONG AND WHAT SHOULD BE DONE ABOUT IT.

PRINTED NAME, GRADE OR TITLE AND TELEPHONE NUMBER

SIGN HERE

## The Metric System and Equivalents

### *Linear Measure*

1 centimeter = 10 millimeters = .39 inch  
 1 decimeter = 10 centimeters = 3.94 inches  
 1 meter = 10 decimeters = 39.37 inches  
 1 dekameter = 10 meters = 32.8 feet  
 1 hectometer = 10 dekameters = 328.08 feet  
 1 kilometer = 10 hectometers = 3,280.8 feet

### *Weights*

1 centigram = 10 milligrams = .15 grain  
 1 decigram = 10 centigrams = 1.54 grains  
 1 gram = 10 decigrams = .035 ounce  
 1 decagram = 10 grams = .35 ounce  
 1 hectogram = 10 decagrams = 3.52 ounces  
 1 kilogram = 10 hectograms = 2.2 pounds  
 1 quintal = 100 kilograms = 220.46 pounds  
 1 metric ton = 10 quintals = 1.1 short tons

### *Liquid Measure*

1 centiliter = 10 milliliters = .34 fl. ounce  
 1 deciliter = 10 centiliters = 3.38 fl. ounces  
 1 liter = 10 deciliters = 33.81 fl. ounces  
 1 dekaliter = 10 liters = 2.64 gallons  
 1 hectoliter = 10 dekaliters = 26.42 gallons  
 1 kiloliter = 10 hectoliters = 264.18 gallons

### *Square Measure*

1 sq. centimeter = 100 sq. millimeters = .155 sq. inch  
 1 sq. decimeter = 100 sq. centimeters = 15.5 sq. inches  
 1 sq. meter (centare) = 100 sq. decimeters = 10.76 sq. feet  
 1 sq. dekameter (are) = 100 sq. meters = 1,076.4 sq. feet  
 1 sq. hectometer (hectare) = 100 sq. dekameters = 2.47 acres  
 1 sq. kilometer = 100 sq. hectometers = .386 sq. mile

### *Cubic Measure*

1 cu. centimeter = 1000 cu. millimeters = .06 cu. inch  
 1 cu. decimeter = 1000 cu. centimeters = 61.02 cu. inches  
 1 cu. meter = 1000 cu. decimeters = 35.31 cu. feet

## Approximate Conversion Factors

<i>To change</i>	<i>To</i>	<i>Multiply by</i>	<i>To change</i>	<i>To</i>	<i>Multiply by</i>
inches	centimeters	2.540	ounce-inches	Newton-meters	.007062
feet	meters	.305	centimeters	inches	.394
yards	meters	.914	meters	feet	3.280
miles	kilometers	1.609	meters	yards	1.094
square inches	square centimeters	6.451	kilometers	miles	.621
square feet	square meters	.093	square centimeters	square inches	.155
square yards	square meters	.836	square meters	square feet	10.764
square miles	square kilometers	2.590	square meters	square yards	1.196
acres	square hectometers	.405	square kilometers	square miles	.386
cubic feet	cubic meters	.028	square hectometers	acres	2.471
cubic yards	cubic meters	.765	cubic meters	cubic feet	35.315
fluid ounces	milliliters	29.573	cubic meters	cubic yards	1.308
pints	liters	.473	milliliters	fluid ounces	.034
quarts	liters	.946	liters	pints	2.113
gallons	liters	3.785	liters	quarts	1.057
ounces	grams	28.349	liters	gallons	.264
pounds	kilograms	.454	grams	ounces	.035
short tons	metric tons	.907	kilograms	pounds	2.205
pound-feet	Newton-meters	1.356	metric tons	short tons	1.102
pound-inches	Newton-meters	.11296			

## Temperature (Exact)

°F	Fahrenheit temperature	5/9 (after subtracting 32)	Celsius temperature	°C
----	------------------------	----------------------------	---------------------	----

